

THE UNITED REPUBLIC OF TANZANIA



**MINISTRY OF WORKS AND TRANSPORT
(WORKS SECTOR)**

**Basic Statistics and Information
in Construction Industry (2021)**



**Rusitu - Mawengi
Concrete Road**



Magomeni Kota



Ubungu Interchange



Tanzanite Bridge



MV-Kilindoni

**GOVERNMENT CITY-MTUMBA
P. O. BOX 2888
40470 DODOMA**



JNIA-Terminal III

JULY, 2022

Table of Contents

Table of Contents	ii
LIST OF TABLE.....	iv
FOREWORD.....	vii
ABBREVIATIONS	ix
CHAPTER ONE	1
INTRODUCTION	1
BASIC BACKGROUND DATA.....	3
CHAPTER TWO	7
2.0 WORKS SECTOR RECURRENT AND DEVELOPMENT BUDGET STATUS	7
Contribution of the Sector to Gross Domestic Product (GDP)....	10
CHAPTER THREE.....	16
3.0 INSTITUTIONS UNDER WORKS SECTOR.....	16
3.1 Tanzania National Roads Agency	16
3.1.1 Classified Road Network	17
3.1.2 Road Classification	18
3.1.3 Road Conditions	19
3.1.4 Construction, Upgrading and Rehabilitation of Airports ...	25
3.1.5 Road Accidents.....	33

3.2 Tanzania Electrical, Mechanical and Electronics Services Agency.....	40
3.3 Tanzania Building Agency.....	52
3.4 Roads Fund Board.....	53
3.4.1 Road Maintenance Activities.....	54
3.5 Contractors Registration Board	58
3.6 Engineers Registration Board	62
3.7 Architects and Quantity Surveyors Registration Board (AQRB)	67
3.8 National Construction Council	70
3.9 Institute of Construction Technology (ICoT)	73
3.9.1 Number of Students Enrolled in the Academic Year 2020/21	73
CHAPTER FOUR.....	76
4.0 LOCAL ROADS	76
4.1 Tanzania Rural and Urban Roads Agency (TARURA).....	40
Anex 2 Road Network Maps by Region as of February, 2022	79

LIST OF TABLE

Table 1: Data Describing Tanzania.....	3
Table 2: Planned Recurrent Budget, Releases and Expenditure for the Period ending 30th June, 2021	8
Table 3: Summary of Development Budget and Funds Released by 30 th June,2021	9
Table 4: Gross Domestic Product by Kind of Economic Activity, at current prices.....	10
Table 5: Share of Gross Domestic Product by Kind of Economic Activity, at current prices	12
Table 6: Gross Domestic Product by Kind of Economic Activity - Annual Growth Rates, at constant 2015 prices	14
Table 7: National Road Network of Tanzania by Category as of December, 2021.....	19
Table 8: Condition of Trunk and Regional Roads as of December, 2021.....	20
Table 9: Condition of Trunk and Regional Roads, (2017- 2021)..	21
Table 10: Distribution of Trunk and Regional Roads by Region and Surface as of December, 2021	23
Table 11: Status of Airports as of December, 2021	25
Table 12: Road Accidents by Category as of December, 2021.....	33
Table 13: Road Accidents as of December, 2021.....	34
Table 14: Ongoing Projects as of December, 2021	35
Table 15: Status of Ferries and their Capacities in each Location as of December, 2021.....	41

Table 16: TEMESA Ferry Traffic Count January-December, 2021	48
Table 17: Motor Vehicle and Plant Registration 1 st January to 31 st December 2021	50
Table 18: Number of Government Houses and Plots Countrywide as of December, 2021.....	52
Table 19: Trend Level of Maintenance Coverage of Routine Maintenance Needs as of December, 2021	56
Table 20: Trend of Percentage Coverage of Periodic Maintenance Needs as of December, 2021	57
Table 21: Number of Registered Contractors by Type and Class as of December 2021.....	59
Table 22: Number of Registered Contractors by Type, -Annually	60
Table 23: Cumulative Number of Registered Building Contractors by Class	61
Table 24: Number of Registered Building Contractors.....	61
Table 25: Cumulative Number of Civil Contractors by Class.....	62
Table 26: Number of Engineering Consulting Firms Registration by Category as of December, 2021.....	63
Table 27: Registration of Engineers by Discipline as of December, 2021.....	64
Table 28: Registered Engineering Consulting Firms as of December, 2021.....	65
Table 29: Professional Registered Architects, Interior Designers, Landscape Architect, Quantity -Surveyors, Building Surveyors Construction Managers, Project Manager and Practicing Firms- Cumulatively as of 31 st December, 2021.....	67

Table 30: Registered Graduate Architects; Graduate Interior Design; Graduate Landscape Architects; Graduate Quantity Surveyors; Graduate ;Building Surveyors; Graduate Construction Managers; Architectural Technicians; Architectural Draughtsmen and Graduate Architectural Technologists	68
Table 31: Firms Registered Architectural, Quantity Surveying, Building Surveying and Interior Design: Cumulatively as on 31 st December,2021.....	69
Table 32: Labour/Material Indices	70
Table 33: Local Roads Network Length (km) as of December, 2021	77
Table 34: Employments Generated During implementation of Development Projects as of December, 2021.....	77

LIST OF FIGURES

Figure 1: Trunk and Regional Roads Network Map	6
Figure 2: Condition of Trunk and Regional Roads, (2017 – 2021)	22
Figure 3: Number of Road Accidents and Death (2017-2021).....	34
Figure 4: Routine Maintenance Needs Against Budget and Percentage Coverage	57
Figure 5: Periodic Maintenance Needs Against Budget and Percentage Coverage	58
Figure 6: Number of Registered Contractors by Type	60

FOREWORD

The Construction Industry is a fundamental economic sector which facilitates most of the other sectors as it transforms various resources into constructed physical economic and social infrastructure necessary for socio-economic development. It embraces the process by which the physical infrastructure are planned, designed, procured, constructed or produced, altered and maintained. Thus, the realization of Vision 2025 partly depends on existence of a reliable and competitive physical infrastructure that is capable of delivering quality services and value for money in the development of the Country.

The goal of the Construction Industry is to develop an internationally competitive industry that will be able to undertake most of the Construction projects in Tanzania and export its services and products and ensure value for money is realized as well as protection of environmental in the implementation of construction projects. Likewise, availability of the realistic data and effective use of the data will facilitate in planning and management as well as in the subsequent implementation of various projects/programs.

In realization of the importance of the above facts, the Ministry of Works and Transport (Works) has annually been publishing a Sectoral Statistics document from data collected from various stakeholders. These include Government Ministries, Departments, Agencies, Institutions and the Private Sector.

The document contains key basic statistics in Construction Industry at national level that covers a period of a year 2021. The interpretation of these statistics is expressed in terms of numerical, graphs, histograms and pie-charts.

Ambassador Eng. Aisha S. Amour
Permanent Secretary
Ministry of Works and Transport (Works)

ABBREVIATIONS

AQRB	Architects and Quantity Surveyors Registration Board
ATTI	Appropriate Technology Training Institute
CE	Consulting Engineer
CRB	Contractors Registration Board
DSM	Dar es Salaam
EDF	European Development Fund
ERB	Engineers Registration Board
GDP	Gross Domestic Product
GE	Graduate Engineer
GIE	Graduate Incorporated Engineer
GoT	Government of Tanzania
GTE	Graduate Technician Engineers
IE	Incorporated Engineers
ICoT	Institute of Construction Technology
JNIA	Julius Nyerere International Airport
KIA	Kilimanjaro International Airport
MoWT	Ministry of Works and Transport
MWTI	Morogoro Works Training Institute
NCC	National Construction Council
NBS	National Bureau of Statistics
PE	Professional Engineer
PO-RALG	President's Office Regional Administration and Local Government

RFB	Roads Fund Board
RMMS	Road Maintenance Management System
TANROADS	Tanzania National Roads Agency
TARURA	Tanzania Rural and Urban Roads Agency
TBA	Tanzania Building Agency
TCE	Temporary Consulting Engineer
TEMESA	Tanzania Electrical Mechanical and Electronics Services Agency
TPE	Temporary Professional Engineers

CHAPTER ONE

INTRODUCTION

Construction Industry Sector Statistics provides a synopsis of Construction Industry issues and other relevant information within the Ministry of Works and Transport (Works) and its Institutions. Their effectiveness, appropriateness and adequateness contribute a lot to the development of other socio-economic activities. Adequate and appropriate data and information is also a prerequisite for strategic planning. In other words, statistics play a major role in strategic planning, management, monitoring and evaluation of the sector. In realization of the importance of information and data, the Ministry of Works and Transport (Works) publishes on annual basis information and data related to Construction Industry Sector. The objective of this publication is to facilitate close monitoring of the performance of the Sector.

For any data to be meaningful there is a need of updating them at a frequency that would ensure meeting users expectation. In view of this fact, information and data contained in the Ministry's data bank are updated annually using inputs received from different stakeholders including Governments Ministries, Departments, Institutions, Agencies and the Private Sector. The analysis which includes histograms, charts and graphs are used

to show trends and behaviours for quick visual interpretation of the presented data of the Sector.

This document is divided into four chapters: Chapter one is the introductory part; brief on basic background data and statistics on Road Network for Tanzania Chapter two provides information on Contribution of the Sector to Gross Domestic product, Works Sector Recurrent and Development Budget status; Chapter three contains, Road Condition, Road accidents, and Motor Vehicle and Plant Registration in Tanzania Mainland; information and statistics on other Institutions of the Sector namely TEMESA, TBA, ERB, AQRB, NCC, RFB, CRB; ICoT and Construction, upgrading and Rehabilitation of Airports. Chapter four contains statistics for Local Roads and Employment generated during the implementation of Works Sector Development projects. It is important to note that this document does not contain all the required data and information for the Construction Sector. In a nutshell, the document provides a summary on data and information for core activities performed by the Ministry (Works). However, comments and inputs are invited from all stakeholders for the purpose of improving it in the future.

BASIC BACKGROUND DATA

Table 1: Data Describing Tanzania

S/N	Particular	Data/Information
1.	Location	East Coast of Africa between latitudes 1°S and 11° S and between longitudes 29°E and 41°E.
2.	Share border with	Kenya and Uganda to the North, Rwanda, Burundi and Democratic Republic of Congo to the West, Zambia, Malawi to the South West and Mozambique to the South.
3.	Total area of Tanzania	939,701 km ² of which 58,100 km ² is water representing a part of Lakes Victoria, Tanganyika, Nyasa and several other smaller lakes, rivers and sea.
4.	Capital City	Dodoma with an estimated population of 2,729,700 people (2021)
5.	Number of Regions	Tanzania Mainland 26 regions and Zanzibar 5 regions
6.	Number of Districts	Tanzania Mainland 168 districts and Zanzibar 10 districts
7.	Arable Land	15.1 million hectare
8.	Cultivated Land per year	5.1 million hectare
9.	Population of Tanzania Mainland	About 59.15 million people (2021).

S/N	Particular	Data/Information
10.	Other major cities with their estimated population (2021)	Dar es Salaam (5,526,600), Mwanza (3,983,800), Arusha (2,156,500), Tanga (2,509,400) and Mbeya (2,274,200).
11.	Average population density of the country	51 inhabitants per square kilometer (inh/km ²)
12.	GDP at current 2015 Prices	135,517,813 Million (2021)
13.	Shares of GDP to Construction	13.8 percent (2021)
14.	GDP Growth rate	4.9 percent (2021)
15.	Construction annual growth rate	4.3 percent (2021)
16.	Mining and Quarrying growth rate	9.6 percent (2021)
17.	Accommodation and Food Services growth rate	6.7 percent (2021)
	Total Road Network	180,791.73 km
18.	Railway Network	The railway system of mainland Tanzania has a total track length of 3,676 kilometres (km) with two separate networks, run by two separate organizations. These are the Tanzania - Zambia Railway Authority (TAZARA), which maintains and operates 975 km network including the Tanzania-Zambia railway line from Dar es Salaam to

S/N	Particular	Data/Information
		Kapiri Mposhi in Zambia, and Tanzania Railways Corporation (TRC) which maintains and operates over 2,706 km network including Tanzania's railway links to Kenya and Uganda.
19.	Major Airports	JNIA, KIA , Mtwara, Mwanza, Arusha and Songwe
20.	Ports Network	There are three (3) Main ports along coast namely Dar es Salaam , Mtwara and Tanga ports at Indian Ocean. Other Small Ports along coast includes Kilwa, Lindi, Mafia, Pangani and Bagamoyo. Main ports along lakes includes Mwanza north and south, Kigoma and Kyela , other Small Ports along lakes includes Kasanga Kibirizi ports at Lake Tanganyika, Bukoba, Kemondo bay, Nansio and Musoma at Lake Victoria and Itungi, Manda, Mbamba bay, Liuli ports at Lake Nyasa
21.	Major Mountains	Mt Kilimanjaro, Mt Meru, and Mt. Rungwe
22.	Major Rivers	River Rufiji, River Wami , River Ruvuma, River Kagera, River Songwe and River Pangani

S/N	Particular	Data/Information
23.	Major Lakes	Lake Victoria (68,800km ²), Lake Tanganyika (32,900km ²), Lake Nyasa (29,600km ²) and Lake Rukwa (5,760km ²)

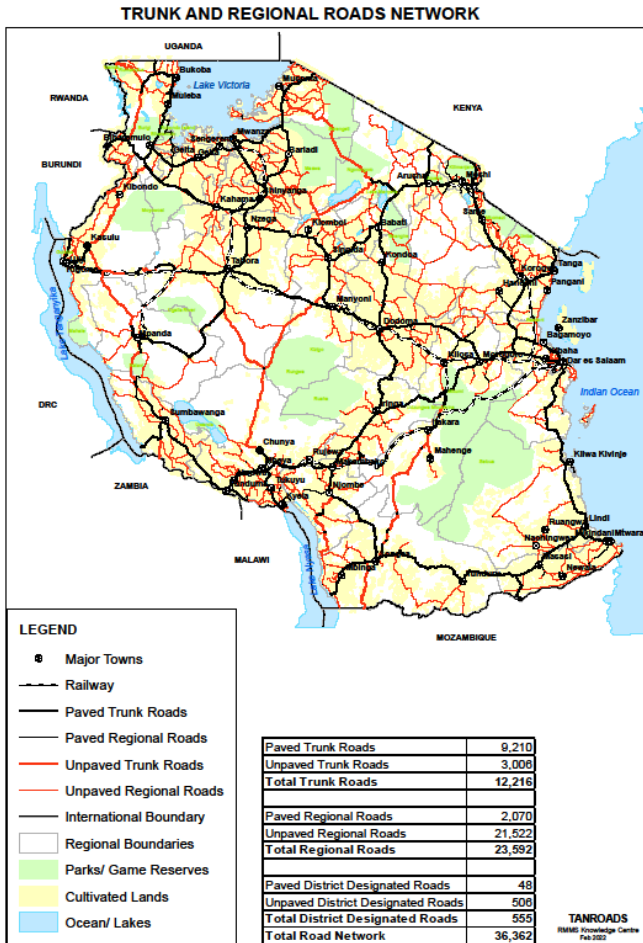


Figure 1: Trunk and Regional Roads Network Map

CHAPTER TWO

WORKS SECTOR RECURRENT AND DEVELOPMENT BUDGET STATUS

The Recurrent and Development budget are for execution of both Ministry other charges and Development Projects respectively in line with plans and targets as described by the CCM Election Manifesto of 2015, National Development Vision 2025, Five Years Development Plan 2016/17 – 2020/21 and Sectoral Policies. Details of Recurrent and Development Budget are indicated in **Table 2 and Table 3.**

Table 2: Planned Recurrent Budget, Releases and Expenditure for the Period ending 30th June, 2021

Financial year	Approved budget	Released fund up to 30 th June	Expenditure up to 30 th June	% of Releases vs Budget	% of Expenditure vs Releases
2016/17	37,769,151,998.84	35,569,714,111.34	35,550,684,039.92	94%	94%
2017/18	35,565,163,330.77	34,761,246,019.97	34,758,375,767.03	97.7	100
2018/19	43,907,615,755.20	42,601,134,846.85	42,574,375,355.35	97.02%	99.93%
2019/20	36,282,751,504.00	32,841,419,899.04	32,817,605,646.61	90.52	99.93
2020/21	40,143,330,487.56	34,661,805,099.16	26,540,671,378.01	86.35	76.57

Source: MoWT (Works), 2021

Table 3: Summary of Development Budget and Funds Released by 30th June, 2021

Financial year	Approved Budget		Total	Cumulative Amount Released		% of Fund Re-leased
	Local	Foreign		Local	Foreign	
2016/17	1,831,365,922,000.00	344,838,635,000.00	2,176,204,557,000.00	1,171,306,597,144.72	217,554,814,713.93	1,388,861,411,858.65
2017/18	1,950,800,395,330.30	514,485,479,635.76	2,465,285,874,966.06	1,904,875,418,455.57	316,198,557,121.77	2,221,073,975,577.34
2018/19	1,580,718,749,370.5	435,927,599,000.00	2,016,646,348,370.56	1,480,293,343,463.6	337,389,630,930.00	1,818,682,974,393.60
2019/20	1,914,762,629,796.00	304,051,604,268.00	2,218,814,234,064.00	1,720,922,726,624.65	304,051,414,258.00	2,024,974,140,882.65
2020/21	1,472,402,577,625.42	325,364,183,000.00	1,797,766,760,625.42	1,264,441,005,658.12	325,078,001,067.46	1,589,519,006,725.58

Source: MoWT (Works), 2021

Contribution of the Sector to Gross Domestic Product (GDP)

Table 4: Gross Domestic Product by Kind of Economic Activity, at current prices

		2017	2018	2019	2020	2021
	Economic Activities					TZS. Million
A	Agriculture, Forestry and Fishing	34,154,594	35,962,728	37,192,537	39,965,584	42,233,161
	Crops	19,703,004	21,003,720	20,686,963	22,867,540	23,513,172
	Livestock	8,857,939	9,240,100	10,345,069	10,609,888	11,256,597
	Forestry	3,310,076	3,459,581	3,738,360	3,947,993	4,578,311
	Fishing	2,245,558	2,218,731	2,379,172	2,494,162	2,836,934
	Agriculture support services	38,017	40,596	42,973	46,001	48,146
	Industry and Construction	29,735,584	34,851,874	39,944,212	44,950,342	47,844,421
B	Mining and quarrying	5,206,217	6,573,059	7,213,403	9,947,971	11,587,501
C	Manufacturing	9,102,282	10,418,776	11,860,403	12,531,009	12,635,164
D	Electricity supply	413,351	348,527	369,917	398,084	380,057
E	Water supply; sewerage, waste management	519,909	566,562	628,187	745,222	876,939
F	Construction	14,493,826	16,944,950	19,872,302	21,328,055	22,364,760
	Services	45,066,596	48,059,561	51,417,505	55,219,511	59,019,313
G	Wholesale and retail trade; repairs	10,843,499	11,793,201	12,264,511	12,935,145	14,056,161
H	Transport and storage	7,897,993	8,381,276	9,622,792	11,172,778	11,527,736

I	Accommodation and Food Services	1,602,543	1,653,792	1,764,898	1,506,711	1,715,764
J	Information and communication	1,829,360	1,948,180	2,052,242	2,196,758	2,375,162
K	Financial and insurance activities	4,789,632	4,947,301	4,927,613	5,259,757	5,414,784
L	Real estate	3,334,171	3,553,630	3,834,061	4,253,233	4,524,204
M	Professional, scientific and technical activities	726,707	817,442	903,234	986,133	1,088,002
N	Administrative and support service activities	3,027,384	3,306,554	3,640,720	3,992,260	4,408,969
O	Public administration and defense	4,986,287	5,131,630	5,354,893	5,530,738	5,876,655
P	Education	2,864,290	3,081,718	3,322,028	3,440,525	3,649,794
Q	Human health and social work activities	1,681,353	1,816,738	1,920,963	2,060,600	2,213,814
R	Arts, entertainment and recreation	322,353	374,924	427,887	416,049	513,448
S	Other service activities	959,152	1,037,612	1,140,417	1,217,190	1,358,754
T	Activities of households as employers;	201,872	215,564	241,246	251,635	296,065
	All Economic Activities	108,956,774	118,874,163	128,554,255	140,135,438	149,096,895
	Taxes on products	9,787,724	10,169,738	11,087,600	11,031,006	12,428,863
	Gross Domestic Product at Market Prices	118,744,498	129,043,901	139,641,854	151,166,444	161,525,759

Source: NBS, 2021

Table 5: Share of Gross Domestic Product by Kind of Economic Activity, at current prices

	Economic Activities	2017	2018	2019	2020	2021
A	Agriculture, Forestry and Fishing	28.8	27.9	26.6	26.4	26.1
	Crops	16.6	16.3	14.8	15.1	14.6
	Livestock	7.5	7.2	7.4	7.0	7.0
	Forestry	2.8	2.7	2.7	2.6	2.8
	Fishing	1.9	1.7	1.7	1.6	1.8
B	Mining and quarrying	4.4	5.1	5.2	6.6	7.2
C	Manufacturing	7.7	8.1	8.5	8.3	7.8
D	Electricity supply	0.3	0.3	0.3	0.3	0.2
E	Water supply; sewerage, waste management	0.4	0.4	0.4	0.5	0.5
F	Construction	12.2	13.1	14.2	14.1	13.8
G	Wholesale and retail trade; repairs	9.1	9.1	8.8	8.6	8.7
H	Transport and storage	6.7	6.5	6.9	7.4	7.1
I	Accommodation and Food Services	1.3	1.3	1.3	1.0	1.1
J	Information and communication	1.5	1.5	1.5	1.5	1.5
K	Financial and insurance activities	4.0	3.8	3.5	3.5	3.4
L	Real estate	2.8	2.8	2.7	2.8	2.8
M	Professional, scientific and technical activities	0.6	0.6	0.6	0.7	0.7
N	Administrative and support service activities	2.5	2.6	2.6	2.6	2.7
O	Public administration and defense	4.2	4.0	3.8	3.7	3.6

P	Education	2.4	2.4	2.4	2.3	2.3
Q	Human health and social work activities	1.4	1.4	1.4	1.4	1.4
R	Arts, entertainment and recreation	0.3	0.3	0.3	0.3	0.3
S	Other service activities	0.8	0.8	0.8	0.8	0.8
T	Activities of households as employers	0.2	0.2	0.2	0.2	0.2
	All Economic Activities	91.8	92.1	92.1	92.7	92.3
	Taxes on products	8.2	7.9	7.9	7.3	7.7
	Gross Domestic Product at market Prices	100.0	100.0	100.0	100.0	100.0

Source: NBS, 2021

Table 6: Gross Domestic Product by Kind of Economic Activity - Annual Growth Rates, at constant 2015 prices

Economic Activities	2017	2018	2019	2020	2021
Agriculture, Forestry and Fishing	5.9	5.4	4.4	4.9	3.9
Crops	6.4	5.2	4.4	5.0	3.6
Livestock	4.9	4.9	5.0	5.0	5.0
Forestry	4.8	4.9	4.8	3.2	3.5
Fishing	8.4	9.2	1.5	6.8	2.5
Mining and quarrying	5.3	1.5	17.7	7.2	9.6
Manufacturing	8.2	8.3	5.8	4.5	4.8
Electricity supply	1.0	5.8	7.2	5.5	10.0
Water supply; sewerage, waste management	6.4	7.4	6.9	5.8	6.5
Construction	15.1	13.8	13.7	9.1	4.3
Wholesale and retail trade; repairs	6.1	5.9	5.5	2.1	3.5
Transport and storage	6.7	11.8	8.7	8.4	3.5
Accommodation and Food Services	3.1	5.2	2.6	-13.7	6.7
Information and communication	6.2	9.1	7.2	8.4	9.1
Financial and insurance activities	-2.8	-0.5	4.5	3.1	4.9
Real estate	4.4	4.4	4.5	4.5	4.5
Professional, scientific and technical activities	14.5	9.9	7.6	7.3	6.8
Administrative and support service activities	10.8	5.6	8.4	7.8	6.9
Public administration and defense	2.4	3.2	3.4	3.8	5.1

Economic Activities	2017	2018	2019	2020	2021
Education	7.3	6.6	6.9	3.3	5.1
Human health and social work activities	7.6	8.4	5.0	6.5	5.7
Arts, entertainment and recreation	9.9	13.7	11.2	-4.4	19.4
Other service activities	12.0	6.5	6.7	5.0	8.5
Activities of households as employers	3.2	3.1	3.1	3.1	3.1
All Economic Activities	7.0	6.9	7.2	5.4	4.8
Taxes on products	4.6	6.3	4.3	-2.3	6.6
Gross Domestic Product at market Prices	6.8	7.0	7.0	4.8	4.9

Source: NBS, 2021

CHAPTER THREE

INSTITUTIONS UNDER WORKS SECTOR

Other Institutions whose data have been collected and analyzed include Tanzania National Roads Agency (TANROADS), Tanzania Electrical, Mechanical and Electronic Services Agency (TEMESA), Tanzania Building Agency (TBA), Roads Fund Board (RFB), National Construction Council (NCC) and regulatory bodies i.e. Contractors Registration Board (CRB), Engineers Registration Board (ERB), and Architect and Quantity Surveyors Registration Board (AQRB). The respective summary data of these Institutions have been given below:-

3.1 Tanzania National Roads Agency

The Tanzania National Roads Agency (TANROADS) is responsible for the maintenance and development of the Trunk and Regional Roads in Tanzania Mainland.

TANROADS was established on 1st July, 2000 by an order published in the Government Gazette, Notice No. 293 of 2000 under Section 3(1) of the Executive Agencies Act No. 30 of 1997, with the expectation of witnessing a significant improvement in road maintenance and development with respect to quality, efficiency and cost-effectiveness. The Agency is responsible for

the management of 36,361.95km of Trunk Roads and Regional Roads according to the Roads Act No. 13 of 2007 and subsequent reclassification up to December, 2020.

The Agency specifically has established the maintenance directorate from which all road maintenance issues are technically and administratively handled. This Directorate is responsible for overall preparation, coordination and budgeting control of roads and bridges maintenance program as stipulated in the TANROADS Strategic and Business Plans. The Directorate has country-wide Regional Offices which are responsible for monitoring and supporting Trunk and Regional Roads to ensure inter-regional movements as well as weighbridge operations to regulate amount of load carried by vehicles.

3.1.1 Classified Road Network

The total classified road network in Tanzania Mainland is estimated to 180,791.73km as of December, 2021. The Ministry of Works, Transport and Communication (Works) through Tanzania National Roads Agency (TANROADS) is managing the National Road Network of about 36,361.95km comprising 12,215.58km of Trunk and 24,146.37km of Regional Roads. The remaining road network of about 144,429.78km of Urban, District and Feeder Roads is under the responsibility of the President's Office-Regional Administration and Local Government (PORALG) through Tanzania Rural and Urban Roads Agency (TARURA).

3.1.2 Road Classification

Paved Roads

These are roads provided with a water resistant pavement designed to withstand traffic wear. They include bituminous surface dressing, asphalt pavements and concrete roads.

Unpaved “Gravel Roads”

These roads are mainly engineered and provided with drainage and running surface of gravel materials.

Unpaved “Earth Roads”

These are the roads formed or shaped by use of compacted local material. Mostly, these are within the District and Village roads. The current inventory of this category is not well established.

3.1.3 Road Conditions

Good Condition

Roads are classified under this category if they are free from defects and require only routine maintenance to keep them in that state. Road condition can objectively be measured by roughness index which indicate the extent of rutting and surface cracking. For gravel roads, gravel loss is also used to measure condition. The driving comfort for paved and gravel roads range between 100-120 km/h and 70-80km/h respectively.

Fair Condition

Under this category, it is anticipated that the road will have significant defects and requires both routine and periodic maintenance to prevent failure. The driving speed for paved and unpaved roads range from 70 - 90 and 20 - 40km/h respectively.

Poor Condition

Poor roads can be termed as those with pavement failure for over 20 percent of the paved area, as shown by rutting and cracking. For gravel roads failure will result in parts of the sub-grade to be exposed and significantly deformed. Roads in poor condition require rehabilitation or reconstruction to bring them to the original condition.

Results of the survey carried out by TANROADS on national road condition is shown in **Table 8** and **Table 9**

Table 7: National Road Network of Tanzania by Category as of December, 2021

Category	Road type	Length (Km)	Total Length (km)
Trunk Roads	Paved	9,058.22	12,215.58
	Unpaved	3,157.36	
Regional Roads	Paved	2,127.94	24,146.37
	Unpaved	22,018.43	
TOTAL		36,361.95	36,361.95

Source: TANROADS, 2021

Table 8: Condition of Trunk and Regional Roads as of December, 2021

Road Class	Condition of National Road Networks						Total	
	Good		Fair		Poor		Km	Percent
	Km	Percent	Km	Percent	Km	Percent		
Trunk (paved)	5,437.34	67	1,556.78	19	1,166.54	14	8,160.66	100
Trunk (unpaved)	716.58	44	434.71	27	480.77	29	1,632.06	100
Regional (paved)	838.51	39	1,116.03	51	216.09	10	2,170.63	100
Regional (unpaved)	5729.99	28	12,392.71	62	1,988.95	10	20,111.65	100
Total Surveyed National Roads Network	12,722.42	40	15,500.23	48	3,852.35	12	32,074.99	100
<p>Note: The total road network was not covered due to the fact that, 4,286.96km were not surveyed due to the reasons that road works were in progress, others were impassable and some are under TANAPA.</p>								

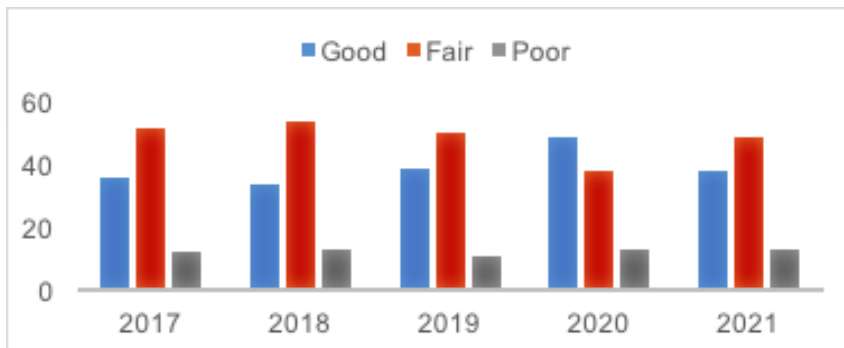
Source: TANROADS, 2021

Table 9: Condition of Trunk and Regional Roads, (2017- 2021)

Year	Condition of National Road Networks							Total	
	Good	Fair	Poor	Good	Fair	Poor	Km	Percent	
	Kilometer			Percent					
2017	11,682	16,639	3,849	36.3	51.7	12.0	32,170	100	
2018	11,043	17,592	4,217	33.6	53.6	12.8	32,852	100	
2019	12,867	16,693	3,618	38.8	50.3	10.9	33,178	100	
2020	12,771	4,257	16,622	49	38	13	33,650	100	
2021	12,722.42	15,500.23	3,852.35	40	48	12	32,074.99	100	

Source: TANROADS, 2021

Figure 2: Condition of Trunk and Regional Roads, (2017 - 2021)



Source: TANROADS, 2021

Table 10: Distribution of Trunk and Regional Roads by Region and Surface as of December, 2021

S/N	Region	Trunk Roads (Km)			Regional Roads (Km)			Commissioned Roads (Km)				Total (Km)		Grand Total (Km)
		Paved	Un-paved	Total	Paved	Un-paved	Total	Paved	Un-paved	Total	Paved	Unpaved		
1	Arusha	367.97	212.85	580.82	50.73	843.82	894.55	0.00	0.00	0.00	418.70	1,056.67	1,475.37	
2	Coast	503.66	0.00	503.66	39.04	836.71	875.75	0.00	0.00	0.00	542.70	836.71	1,379.41	
3	Dares Salaam	119.97	0.00	119.97	230.58	170.17	400.75	42.77	35.75	78.52	393.32	205.92	599.24	
4	Dodoma	552.19	0.00	552.19	3718	1,1785	1,55.03	0.00	0.00	0.00	589.37	1,117.85	1,707.22	
5	Geita	236.18	0.00	236.18	160.48	451.80	612.28	2.66	76.21	78.87	399.32	528.01	927.33	
6	Iringa	393.48	67.35	460.83	32.80	724.08	756.88	0.00	0.00	0.00	426.28	791.43	1,217.71	
7	Kagera	630.10	231.49	861.59	134.47	919.28	1,053.75	0.00	50.95	50.95	764.57	1,201.72	1,966.29	
8	Katavi	268.62	205.09	473.71	29.51	692.08	721.59	0.00	0.00	0.00	298.13	89717	1,195.30	
9	Kigoma	301.48	356.42	657.90	0.40	724.13	724.53	0.00	65.00	65.00	301.88	1,145.55	1,447.43	
10	Kilimanjaro	292.74	0.00	292.74	219.08	543.69	762.77	0.00	0.00	0.00	511.82	543.69	1,055.51	
11	Lindi	347.97	0.00	347.97	48.91	892.61	941.52	0.00	0.00	0.00	396.88	892.61	1,289.49	
12	Manyara	206.59	0.00	206.59	50.65	1,399.75	1,450.40	0.00	0.00	0.00	257.24	1,399.	1,656.99	
13	Mara	194.00	215.73	409.73	103.34	850.47	953.81	0.00	63.38	63.38	297.34	1,129.58	1,426.92	
14	Mbeya	389.23	182.31	571.54	80.10	603.83	683.93	0.00	0.00	0.00	469.33	786.14	1,255.47	
15	Morogoro	464.87	384.55	849.42	167.50	1,054.31	1,221.81	0.00	0.00	0.00	632.37	1,438.86	2,071.23	

S/N	Region	Trunk Roads (Km)			Regional Roads (Km)			Commissioned Roads (Km)				Total (Km)		Grand Total (Km)
		Paved	Un-paved	Total	Paved	Un-paved	Total	Paved	Un-paved	Total	Paved	Unpaved		
16	Mtwara	277.64	0.00	277.64	143.77	894.59	1,038.36	0.00	0.00	0.00	421.41	894.59	1,316.00	
17	Mwanza	261.86	0.00	261.86	25.74	835.05	860.79	0.00	22.85	22.85	287.60	857.90	1,145.50	
18	Njombe	201.37	202.05	403.42	49.84	734.97	784.81	0.00	0.00	0.00	251.21	937.02	1,188.23	
19	Rukwa	298.05	117.81	415.86	76.83	758.15	834.98	0.00	0.00	0.00	374.88	875.96	1,250.84	
20	Ruvuma	702.60	218.38	920.98	31.34	1,214.30	1,245.64	0.00	0.00	0.00	733.94	1,432.68	2,166.62	
21	Shinyanga	225.31	51.79	277.10	31.35	629.40	660.75	0.00	65.10	65.10	256.66	746.29	1,002.95	
22	Simiyu	212.26	120.78	333.04	11.32	514.19	525.51	0.00	66.99	66.99	223.58	701.96	925.54	
23	Singida	430.18	242.69	672.87	58.55	984.70	1,043.25	0.00	0.00	0.00	488.73	1,227.39	1,716.12	
24	Songwe	233.63	0.00	233.63	18.29	730.72	749.01	0.00	0.00	0.00	251.92	730.72	982.64	
25	Tabora	770.49	196.60	967.09	51.99	1,105.23	1,157.22	3.00	59.99	62.99	825.48	1,361.82	2,187.30	
26	Tanga	327.25	0.00	327.25	185.72	1,296.33	1,482.05	0.00	0.00	0.00	512.97	1,296.33	1,809.30	
TOTAL		9,209.69	3,005.89	12,215.58	2,069.51	21,522.21	23,591.72	48.43	506.22	554.65	11,327.63	25,034.32	36,361.95	

Source: TANROADS, 2021

3.1.4 Construction, Upgrading and Rehabilitation of Airports

Tanzania Mainland has a total of 368 aerodromes, out of which 58 are maintained and operated by Tanzania Airport Authority (TAA). Construction, upgrading and rehabilitation of airport works is under TANROADS. Details of each airport is indicated in **Table 11**

Table 11: Status of Airports as of December, 2021

No	Region	Name of Airport/Airstrip	Class/Code	Runway			Condition	Other Airport Infrastructure	Status	
				Material	Length (m)	Width (m)			Operational/Non Operational	International/Local
01	Dar es Salaam	Julius Nyerere	4E	AC	3000	45 plus 15m hard shoulders	Good	Available	Operational	International
			3C	AC	1000	30	Good		Operational	
02	Pwani	Mafia	3C	AC	1500	30	Good	Some Available	Operational	Local
		Utete	1C	Grass	640	60	Worst	Not Available	Non Operational	Local

No	Region	Name of Airport/Airstrip	Class/Code	Runway			Other Airport Infrastructure	Status		
				Material	Length (m)	Width (m)		Condition	Operational/Non Operational	International/Local
03	Kagera	Bukoba	3C	AC	1500	30	Good	Some Available	Operational	Local
		Ngara	2A	Gravel	1500	19		Not Available	Operational	Local
		Biharamulo	UC	Grass	935	18		Not Available	Operational	Local
04	Iringa	Iringa	2C	AC	1679	30	Fair	Some Available	Operational/Under construction	Local
		Mafinga	2C	Grass	1328	30	TBD	Not Available	Operational	Local
05	Mbeya	Mufindi/Sao Hill	2C	Grass	1000	40	TBD	TBD	Operational	Local
		Songwe	4C	AC	3340	45	Good	Available	Operational	International
		Mbeya	3C	Gravel	1500	30	TBD	Some Available	Closed	Entry & Exit
		Chunya	UC	Grass	1332	30	TBD	TBD	Operational	Local

No	Region	Name of Airport/Airstrip	Class/Code	Runway			Other Airport Infrastructure	Status	
				Material	Length (m)	Width (m)		Condition	Operational/Non Operational
06	Katavi	Mpanda	3C	AC	2000	30	Good	Operational	Local
		Inyonga	2C	Grass	914	40	Fair	Operational	Local
07	Kigoma	Kigoma	4C	AC	1800	45	Good	Operational	Entry/Exit
		Uvinza	1C	Grass	914	46	Fair	Operational	Local
		Kasulu	3B	Gravel	1400	23	Good	Operational	Local
		Kibondo	2C	Gravel	1189	40	Good	Operational	Local
08	Dodoma	Dodoma	3C	AC	2700	30	Good	Operational	Local
		Kondoa	1C	Grass	732	50	Fair	Operational	Local
		Mvumi	2A	Grass	914	20	Fair	Operational	Local
		Mpwapwa	1C	Grass	674	30	TBD	Operational	Local
		Kongwa	3C	Gravel	1368	30	Fair	Operational	Local
		Msalato	3C	NIL	NIL	NIL	NIL	NIL	Proposed New Airport

No	Region	Name of Airport/Airstrip	Class/Code	Runway			Other Airport Infrastructure	Status		
				Material	Length (m)	Width (m)		Condition	Operational/Non Operational	International/Local
12	Morogoro	Morogoro	2B	Gravel/Grass	1068	30	Fair	TBD	Operational	Local
		Kilosa	2C	Grass	1154	46	Fair	No	Operational	Local
		Ifakara	3C	Grass	1600	30	Fair	No	Operational	Local
13	Arusha	Arusha	3C	AC	1600	30	Good	Some Available	Operational	Local
		Loliondo	2B	Grass	1760	28	Fair	TBD	Operational	Local
		Lake Manyara	2B	Gravel	1220	23	Good	Some Available	Operational	Local
14	Ruvuma	Songea	3C	AC	1860	30	Good	Available	Operational	Local
		Liuli	1C	Grass	914	30	TBD	TBD	Operational	Local
		Mbambabay	1C	Grass	560	30	Fair	TBD	Operational	Local
		Tunduru	2B	Grass	1021	23	Bad	TBD	Closed	Local

No	Region	Name of Airport/Airstrip	Class/Code	Runway			Other Airport Infrastructure	Status	
				Material	Length (m)	Width (m)		Condition	Operational/Non Operational
15	Mtwara	Mtwara	4D	AC	2800	45	Good	Operational	Local
			2C	Grass	1158	30	Good		
		Masasi	3C	Gravel	1273	40	Good	Operational	Local
16	Tanga	Tanga	3C	AC	1263	30	Fair	Operational	Entry and Exit
			2C	Grass	1158	30	Good		
		Mombo	3C	Grass	1585	46	Good	Not Available	Local
17	Kilimanjaro	Mkwaja	3C	Grass	1200	45	Fair	Not Available	Local
		Kilimanjaro	4E	AC	3600	45 and 15m shoulders	Good	Operational	International
		Moshi	3C	AC	1268	30	Bad	Operational	Entry and Exit
			3C	Grass	1480	30	Bad		

No	Region	Name of Airport/Airstrip	Class/Code	Runway			Other Airport Infrastructure	Status		
				Material	Length (m)	Width (m)		Condition	Operational/Non Operational	International/Local
		W.Kili-manjaro/Ngarenai-robi	2C	Grass	1237	37	Fair	Not Available	Operational	Local
		Same	2C	Grass	1143	45	Fair	Not Available	Operational	Local
18	Njombe	Njombe	3C	Grass	1890	30	Good	Not Available	Operational	Local
19	Shinyanga	Shinyanga	3C	Gravel	2000	30	Good	Not Available	Operational	Local
		Kahama	3C	EBS	1530	30	Fair	Not Available	Operational	Local
20	Rukwa	Sum-bawanga	3C	Grass	1600	33	Fair	Not Available	Operational	Local
		Mwanza	4D	AC	3800	45	Good	Available	Operational	Entry & Exit
21	Mwanza	Ukerewe	2C	Grass	914	30	Fair	Not Available	Operational	Local

No	Region	Name of Airport/Airstrip	Class/Code	Runway			Other Airport Infrastructure	Status	
				Material	Length (m)	Width (m)		Condition	Operational/Non Operational
22	Tabora	Tabora	3C	AC	1800	30	Good	Operational	Local
			3C	AC	1200	30	Good		
23	Mara	Urambo	3C	Grass	1524	46	Fair	Operational	Local
		Musoma	2C	Gravel	1600	30	Fair	Operational	Entry & Exit
24	Geita	Chato	4C	AC	3000	45	Good	Operational	Domes-tic
25	Songwe	N/A	NIL		NIL	NIL	NIL	Non Opera-tional	New Proposal
26	Man-yara	Mwada Area	NIL	NIL	NIL	NIL	NIL	Non Opera-tional	New Proposal

NB: EBS stands for 'Emulsified Base Solution'
TBD stands for 'To be determined'
UC stands for 'Unclassified'

Source: MoWT (Works), 2021

3.1.5 Road Accidents

Table 12: Road Accidents by Category as of December, 2021

Category	2017		2018		2019		2020		2021	
	Deaths	Casualties	Deaths	Casualties	Deaths	Casualties	Deaths	Casualties	Deaths	Casualties
Drivers	202	411	178	352	153	280	151	183	173	159
Passengers	790	3,157	707	2,035	469	1,608	502	1,355	173	1419
Motorcyclist	623	963	313	648	309	437	236	288	225	184
Cyclist	204	124	114	88	111	55	65	30	62	32
Pedestrian	751	820	467	593	381	450	311	265	267	162
Cart pusher	11	14	9	30	17	4	5	5	0	2
TOTAL	2,581	5,489	1,788	3,746	1,440	2,834	1,270	2,126	900	1958

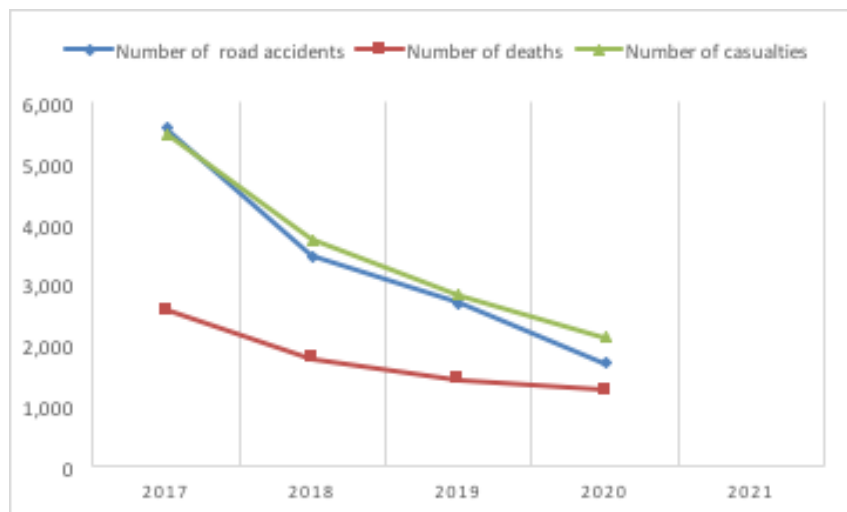
Source: Ministry of Home Affairs, 2021

Table 13: Road Accidents as of December, 2021

Year	2017	2018	2019	2020	2021
Number of road accidents	5,578	3,464	2,704	1,714	1,698
Number of deaths	2,581	1,788	1,440	1,270	900
Number of casualties	5,489	3,746	2,834	2,126	1,958

Source: Ministry of Home Affairs, 2021

Figure 3: Number of Road Accidents and Death (2017-2021)



Source: Ministry of Home Affairs, 2021

Note: Number of death ,road accident and Casualties has shown a declining trend for the past five years, from 2017 to 2021.

Table 14: Ongoing Projects as of December, 2021

S/N	Project Name	Length in km	Contract Sum/ Revised (Billion)	Financier	Progress (%)
1	Chunya - Makongorosi	39	67.292	GoT	97.20%
2	Makutano - Nata	50	54.594	GoT	91.50%
3	Rudewa - Kilosa	24	32.903	GoT	84.35%
4	Wasso - Sale jctn	49	87.230	GoT	97.36%
5	Maswa Bypass	11.3	13.447	GoT	9.00%
6	Tanga - Pangani	50	66.853	GoT	24.00%
7	Tanroads HQ Building		30.131	GoT	40.07%
8	Sibiti Bridge	0.082	16.300	GoT	95% under extended DLP
9	Wami Bridge	4.325	67.779	GoT	72.88%
10	Lusitu - Mawengi	50	179.176	GoT	83.46%
11	Njombe - Moronga	53.9	113.236	GoT	Substantially completed
12	Moronga - Makete	53.5	130.168	GoT	88.00%
13	Kimara - Kibaha	19.2	161.487	GoT	80.50%
14	Ruangwa - Nanganga	53.2	50.340	GOT	42.00%
15	Kwala dry Port to Vigwaza access road	15.5	30.875	GoT	30.55%

S/N	Project Name	Length in km	Contract Sum/ Revised (Billion)	Financier	Progress (%)
16	Kibondo Town link (Nduta JCT -Kibondo Town-Kibondo JCT)	25.9	31.900	GOT	37.40%
17	LOT 1: Nyamuswa - Bulamba	56.4	56.500	GoT	35.00%
18	LOT 2: Sanzate - Natta	40	39.470	GoT	10.00%
19	J. P. Magufuli Bridge	3.2	592.610	GoT	36.94%
20	Msalato International Airport - Phase 1 : Lot 1 (Package 1: Infrastructure)	2.8	165.000	AfDB/ GoT	0.00%
21	Mtwara Airport Phase I	2.8	55.213	GoT	86.00%
22	Iringa Airport	2.1	41.126	GoT	37.80%
23	Songea Airport	1.86	37.090	GoT	85.00%
24	Geita Airport	3	39.150	GoT	98.00%
25	Songwe Airport - Runway	3.3	14.760	GoT	95.00%
26	Songwe Airport - Lighting		5.043	GoT	40.00%
27	Songwe Airport - Balance Works Terminal Building		14.118	GoT	17.00%

S/N	Project Name	Length in km	Contract Sum/ Revised (Billion)	Financier	Progress (%)
28	Musoma Airport	1.6	35.048	GoT	8.00%
29	Usesula - Komanga	108	158.825	AfDB	Substantially completed
30	Komanga - Kasinde	108	140.025	AfDB	Substantially completed
31	Kasinde - Mpanda	108	133.803	AfDB	Substantially completed
32	Lot 1: Kasulu Jct - Manyovu including Kasulu Town Link	68.25	76.180	AfDB/ GoT	16.62%
33	Lot 2: Kanyani Jct - Mvugwe	70.5	83.740	AfDB/ GoT	14.93%
34	Lot 3: Mvugwe - Nduta Jct	59.35	84.750	AfDB/ GoT	24.57%
35	Nduta Jct - Kibondo Jct - KABINGO	62.5	80.960	AfDB/ GoT	17.76%
36	Lot 1: Nala - Veyula - Mtumba - Ihumwa dry Port	52.3	100.840	AfDB/ GoT	2.23%
37	Lot 2: Ihumwa dry Port - Matumbulu - Nala	60	120.860	AfDB/ GoT	3.00%
38	BRT Phase 2- Road Works - Lot 1	20.3	189.400	IDA	47.30%

S/N	Project Name	Length in km	Contract Sum/ Revised (Billion)	Financier	Progress (%)
39	BRT Phase 2 - Building Works - Lot 2	0	44.800	IDA	Imekamilika
40	Gerezani Bridge	0	23.740	JAPAN/ GoT	78.80%
41	Widening of Morocco - Mwenge	12.9	66.000	JAPAN/ GoT	100.00%
42	Kidatu - Ifakara	66.9	100.805	EU	51.10%
43	Selander Bridge	1.03	243.750	Exim Bank	99.90%
44	Kazilambwa - Chagu	36	32.460	OPEC/ GOT	32.50%
45	Malagarasi - Ilunde-Uvinza	51.1	73.895	OPEC/ ADFD/ GOT	0.00%
46	Tungamaa - Mkwaja - Mkange	95.2	94.539	AfDB/ GOT	0.00%
47	Songwe/Kasumulu - Tanzania/ Malawi Boarder OSBP		26.43	IDA/ GOT	79.23%
48	Vigwaza OSIS Phase I		17.138	IDA/ GOT	99.00%
49	Improvement of Assorted Accident Blackspot (COAST)		7.845	IDA/ GOT	100.00%

S/N	Project Name	Length in km	Contract Sum/ Revised (Billion)	Financier	Progress (%)
50	Improvement of Assorted Accident Blackspot (Morogoro)		18.774	IDA/ GOT	68.65%
51	Refurbishment of 20 Health facilities - Lot 1A		1.002	IDA/ GOT	98.00%
52	Refurbishment of 20 Health facilities - Lot 1B		1.192	IDA/ GOT	98.00%
53	Refurbishment of 20 Health facilities - Lot 2		1.143	IDA/ GOT	98.00%
54	Rehabilitation, Construction and expansion of EMS lot 1		0.403	IDA/ GOT	80.00%
55	Rehabilitation, Construction and Expansion of EMS Lot 2		0.436	IDA/ GOT	85.00%
56	Rehabilitation, Construction and Expansion of EMS Lot 3		0.238	IDA/ GOT	98.00%

S/N	Project Name	Length in km	Contract Sum/ Revised (Billion)	Financier	Progress (%)
57	Rehabilitation, Construction and expansion of EMS LOT 4		0.311	IDA/ GOT	98.00%

Source: TANROADS, 2021

3.2 Tanzania Electrical, Mechanical and Electronics Services Agency

Tanzania Electrical, Mechanical and Electronics Services Agency (TEMESA) is established under the Ministry of Works, Transport and Communication (Works) with the aim of providing efficient and effective electrical, mechanical and electronic services, reliable and safe ferry transport services and hiring of equipment to government institutions and the public at large. The Agency was established on 25th August 2005 in accordance with the Executive Agencies Act No. 30 of 1997. **Table 15** and **Table 16** provide number of ferries operated by TEMESA and their capacities respectively.

Table 15: Status of Ferries and their Capacities in each Location as of December, 2021

S/N	Operational Location	Region	Name of Ferry	Ferry Capacity	Year of Purchase	Status
1	Magogoni-Kigamboni	Dar es Salaam	MV Kigamboni	<ul style="list-style-type: none"> ● 160 Tons ● 800 Passengers ● 22 Small Vehicles 	1990	Operational Undergone major rehabilitation in 2020
			MV Magogoni	<ul style="list-style-type: none"> ● 500 Tons ● 2000 Passengers ● 60 Small Vehicles 	2008	Operational
			MV Kazi	<ul style="list-style-type: none"> ● 170 Tons ● 800 Passengers ● 22 Small Vehicles 	2017	Operational
2	Kigongo - Busisi	Mwanza	MV Sengerema	<ul style="list-style-type: none"> ● 170 Tons ● 490 Passengers ● 24 Small vehicles 	1985	<ul style="list-style-type: none"> ● Operational ● Undergone major rehabilitation in 2021
			MV Sabasaba	<ul style="list-style-type: none"> ● 85 Tons ● 330 Passengers ● 10 Small Vehicles 	1970	Operational

S/N	Operational Location	Region	Name of Ferry	Ferry Capacity	Year of Purchase	Status
			MV Misungwi	<ul style="list-style-type: none"> • 250 Tons • 1000 Passengers • 36 Small vehicles 	2008	<ul style="list-style-type: none"> • Operational • Under rehabilitation plan in Financial Year 2021/22
			MV Ukara	<ul style="list-style-type: none"> • 15 Tons • 70 Passengers 	1978	Operational
			MV Ukara II (Hapa Kazi tu)	<ul style="list-style-type: none"> • 100 Tons • Passengers 300 • Small Vehicles 10 	2020	Operational
			MV Mwanza (Tag boat)	<ul style="list-style-type: none"> • 55 Tons • 100 Passengers • 4 Small vehicles 	1968	<ul style="list-style-type: none"> • Operational • Undergone major rehabilitation in 2021
			MV Mwanza	<ul style="list-style-type: none"> • 250 Tons • 1,000 Passengers • 36 Small vehicle 	2018	Operational
3	Mwanza City	Mwanza	MV Temesa	<ul style="list-style-type: none"> • 65 Tons • 80 Passengers • 4 Small vehicles 	1968	Operational

S/N	Operational Location	Region	Name of Ferry	Ferry Capacity	Year of Purchase	Status
4	Bugolora - Ukara	Mwanza	MV Nyerere	<ul style="list-style-type: none"> • 25Tons • 101 Passengers • 4 Small Vehicles 	2004	Grounded waiting for major rehabilitation
5	Chato - Nkome	Geita	MV Chato	<ul style="list-style-type: none"> • 75 Tons • 200 Passengers • 6 Small Vehicles 	1977	Operational
			MV Chato II "hapa kazi tu"	<ul style="list-style-type: none"> • 100 Tons • 200 Passengers • 10 Small Vehicles 	2020	Operational (NEW)
6	Kisorya - Rugezi	Mwanza	MV Ujenzi	<ul style="list-style-type: none"> • 85 Tons • 330 Passengers • 10 Small vehicles 	2011	<ul style="list-style-type: none"> • Operational • Waiting for major rehabilitation
7	Kahunda - Maisome	Mwanza	MV Tegemeo	<ul style="list-style-type: none"> • 85 Tons • 200 Passengers • 10 Small Vehicles 	2013	<ul style="list-style-type: none"> • Operational • Undergone major rehabilitation in 2021

S/N	Operational Location	Region	Name of Ferry	Ferry Capacity	Year of Purchase	Status
8	Nyakaliro - Kome	Mwanza	MV Kome II	<ul style="list-style-type: none"> • 50 Tons • Passengers 100 • Small Vehicles 6 	2008	<ul style="list-style-type: none"> • Operational • Waiting for major rehabilitation
9	Kayenze/ Bezi	Mwanza	MV Ilemela	<ul style="list-style-type: none"> • 100 Tons • Passengers 200 • Small Vehicles 10 	2020	Operational (NEW)
10	Kilombero - Uranga	Morogoro	MV Kilombero I	<ul style="list-style-type: none"> • 50 Tons • Passengers 100 • Small Vehicles 6 	2002	Grounded
			MV Kilombero II	<ul style="list-style-type: none"> • 50 Tons • 100 Passengers • 6 Small vehicles 	2007	Not operating; (will be shifted to new crossing namely Mlimba - Malinyi)

S/N	Operational Location	Region	Name of Ferry	Ferry Capacity	Year of Purchase	Status
11	Pangani - Mbweni	Tanga	MV Pangani II	<ul style="list-style-type: none"> • 50 Tons • 100 Passengers • 6 Small vehicles 	2010	<ul style="list-style-type: none"> • Operational • Undergone major rehabilitation in 2020
			MV Tanga	<ul style="list-style-type: none"> • 50 Tons • 100 Passengers • 6 Small vehicles 	2016	<ul style="list-style-type: none"> • Operational • Waiting for major rehabilitation
			MV Bweni	<ul style="list-style-type: none"> • 800 Kgs • 8 Passengers 	2017	Operational
12	Ilagala - Kajeje	Kigoma	MV Ilagala	<ul style="list-style-type: none"> • 50 Tons • Passengers 100 • Small vehicles 6 	2005	Non-Operational
			MV Malagarasi	<ul style="list-style-type: none"> • 50 Tons • 100 Passengers • 6 Small Vehicles 	2013	Operational

S/N	Operational Location	Region	Name of Ferry	Ferry Capacity	Year of Purchase	Status
13	Kasharu - Buganguzi	Kagera	MV Kyanyabasa	<ul style="list-style-type: none"> • 7 Tons • 50 Passengers • 2 Small Vehicles 	1975	Operational
14	Rusumo - Nyakiziba		MV Ruvuvu	<ul style="list-style-type: none"> • 35 Tons • 100 Passengers • 4 Small Vehicles 	2011	Operational
15	Ilunga - Kipingu	Ruvuma	MV Ruhuhu	<ul style="list-style-type: none"> • 50 Tons • 100 Passengers • 6 Small Vehicles 	2008	<ul style="list-style-type: none"> • Operational • Waiting for major rehabilitation
16	Kilambo - Namoto	Mtwara	MV Kilambo	<ul style="list-style-type: none"> • 50 Tons • 100 Passengers • 6 Small Vehicles 	2013	Grounded
			MV Tangazo (Small Boat)	<ul style="list-style-type: none"> • 2.5 Tons • 25 Passengers 	2017	Operational
17	Msanga Mkuu - Msemo		MV Mafanikio	<ul style="list-style-type: none"> • 50 Tons • 100 Passengers • 6 Small Vehicles 	2014	<ul style="list-style-type: none"> • Operational • Undergone major rehabilitation in 2021

S/N	Operational Location	Region	Name of Ferry	Ferry Capacity	Year of Purchase	Status
			MV Kuchele	<ul style="list-style-type: none"> • 800 Kgs • 8 Passengers 	2017	Operational
18	Utete - Mkongo	Pwani	MV Mkongo (Small Boat)	<ul style="list-style-type: none"> • 15 Tons • 40 Passengers 	2017	<ul style="list-style-type: none"> • Grounded • Waiting for major rehabilitation
19	Nyamisati/mafia	Pwani	MV Kilindoni	<ul style="list-style-type: none"> • 100 Tons • Passengers 300 • Small Vehicles 10 	2020	Operational (NEW)
20	Musoma - Kinesi	Mara	MV Musoma	<ul style="list-style-type: none"> • 85 Tons • 330 Passengers • 10 Small Vehicles 	2011	Undergoing major rehabilitation
21	Iramba - Majita	Mara	MV Mara	<ul style="list-style-type: none"> • 25 Tons • 75 Passengers • 2 Small Vehicles 	1971	<ul style="list-style-type: none"> • Operational • Waiting for major rehabilitation
22	Lindi - Kitunda	Lindi	MV Kitunda	<ul style="list-style-type: none"> • 50 Tons • 100 Passengers • 6 Small Vehicles 	2009	<ul style="list-style-type: none"> • Grounded • Waiting for major rehabilitation

Source: TEMESA, 2021

Table 16: TEMESA Ferry Traffic Count January-December, 2021

Ferry/ Station	Adults	Children <=14 yrs	Bicycle & m/cycle	Pkg<50 kg&Pkg>50 kg	Carts, t/ cycles &Psg t/ cycles	Cat- tle&oth- er d/ animal	Saloon 0 = < 1.5 ton	Station Wagon	Min bus <=15 psg, veh>15psg <=29psg, veh >29 psg & veh >2t <=7t >2t<=3.5t	Trac- tor& Tractor trailer	Lorries 8-30 tonne & buses >45 psg	Heavy trucks, plants, earht mov- er & heavy eqip
Magogoni Ferry	25,307,298	3,370,024	621,724	5,610	164,200	6,998	427,362	48,018	934	42	3,918	80
Kigongo/ Busisi	6,150,256	925,682	112,804	13,358	20,286	5,552	395,756	-	124,504	66,236	46,754	936
Kisoriya/Rugezi	309,402	14,050	13,742	35,118	11,620	6,532	4,494	1,520	6,516	5,280	442	64
Nyakaliro/Kome	282,218	1,852	18,200	22,010	3,848	822	820	892	15,036	366	-	-
Bugolora/Ukara	223,514	6,484	15,154	39,324	6,976	3,186	2,864	418	1,686	580	-	-
Chato/Nkome	39,426	10,754	9,158	22,982	4,242	5,548	1,198	128	36	20	-	-
Ilagala/Kajeje	262,680	234	61,474	666	3,140	1,122	5,286	4,784	6,028	-	260	320
Kilambo/Namotto	-	-	-	-	-	-	-	-	-	-	-	-
Mafia/Nyamisati	26,800	1,032	212	78,088	6	-	24	64	40	2	22	10
Pangani/Bweni	399,748	10,256	190,434	5,204	5,022	1,402	9,696	6,438	11,024	128	1,930	20
Rusumo/Nyankiziba	-	-	-	-	-	-	-	-	-	-	-	-
Kasharu/Buganguzi	34,454	28	18,794	6,092	6	36	3,160	-	622	-	-	-
Utete/Mkongo	23,890	4,146	2,810	-	-	-	-	-	-	-	-	-
Ilunga/Kipingu	67,618	268	14,942	27,066	-	304	7,024	-	1,816	-	-	-
Musoma/Kinesi	183,890	18,712	16,028	168,460	446	3,750	196	-	656	-	-	-

Ferry/ Station	Adults	Children <=14 yrs	Bicycle & m/cycle	Pkg<50 kg&p- kg>50 kg	Carts, t/ cycles &psg t/ cycles	Cat- tle&oth- er d/ animal	Saloon 0 < 1.5 ton	Station Wagon	Min bus <=15 psg, veh>15psg, <=29psg, veh >29psg, & veh >2t<=7t >2t<=3.5t	Trac- tor& Tractor trailer	Lorries 8-30 tonne & buses >45 psg	Heavy trucks, plants, earth mov- er & heavy equip
K i l u m b a / Luchelele	55,508	2,044	12,586	7,726	506	724	450	32	-	74	-	-
Iramba/Majita	45,954	3,584	4,586	18,146	144	1,724	-	-	-	-	-	-
Lindi/Kitunda	289,898	27,806	7,512	4,750	1,790	748	246	48	-	14	-	-
Ka h u n d a / m a i - some	217,638	105,330	51,228	23,050	1,180	304	6,478	764	1,164	4	24	-
Msanga Mkuu/ Msemu	174,060	9,872	18,248	16,642	936	12	726	532	356	-	74	-
Kayenze/Bezi	386,000	6,246	3,376	7,852	4,716	3,988	2,546	754	726	358	-	-
TOTAL	34,480,252	4,518,404	1,193,012	502,144	229,064	42,752	868,326	64,392	171,144	75,104	53,424	1,430

Source: TEMESA, 2021

Table 17: Motor Vehicle and Plant Registration 1st January to 31st December 2021

Year	Registration						
	Category	Plate Numbers			Type		
		From	To	Total	Motor Vehicle	Motor Cycle	Plant
2017	STL	5558	6056	499	73	426	0
	DEPA	2967	3662	696	407	282	7
	STA	282	286	5	5	0	0
	PT	4116	4154	39	21	18	0
	CW	6716	6720	5	0	0	5
	MT	347	348	2	2	0	0
	UT	1	65	65	51	14	0
	TOTAL			1,311	559	740	12
2018	STL	6057	6773	717	536	181	0
	DEPA	3663	7165	3,503	417	3,046	40
	STA	287	293	7	7	0	0
	PT	4155	4188	34	20	14	0
	CW	6721	6721	1	0	0	1
	MT	349	373	25	15	4	6
	UT	66	250	185	80	105	0
	TOTAL			4,472	1,075	3,350	47
2019	STL	6772	7635	866	765	101	0
	DEPA	7166	7676	511	368	126	17
	STA	294	297	4	4	0	0
	PT	4189	4510	323	309	14	0
	CW	6722	6736	15	0	0	15
	MT	374	381	8	2	2	4
	UT	251	272	22	22	0	0
	ZT	1	46	46	42	0	0
	TOTAL						

Year	Registration						
	Category	Plate Numbers			Type		
		From	To	Total	Motor Vehicle	Motor Cycle	Plant
2020	STL	7636	9009	1,374	664	710	0
	DFPA	7677	8540	864	292	552	20
	STA	297	298	1	1	0	0
	PT	4511	4579	49	28	21	0
	CW	6737	6753	17	0	0	17
	MT	382	383	2	2	0	0
	UT	273	304	32	21	11	0
	ZT	43	61	19	19	0	0
	TOTAL			2,358	1,027	1,294	37
2021	STL	9010	9999	990	736	254	0
	STM	0001	0016	16	16	0	0
	STA	299	312	14	14	0	0
	DFPA	8541	9007	467	194	271	2
	PT	4568	4586	19	19	0	0
	CW	6754	6756	3	0	0	3
	MT	384	391	8	8	0	0
	UT	305	325	21	16	5	0
	ZT	62	82	21	16	5	0
TOTAL			1559	1019	535	5	
Key: STL – Government; DFPA – Donor Fund Project; STA – State; PT – Police Tanzania; MT – Magereza Tanzania; UT – Uhamiaji Tanzania; ZT – Zimamoto Tanzania; CW – Plant							

Source: MoWT (Works), 2021

3.3 Tanzania Building Agency

Tanzania Building Agency (TBA) is the Government's Executive Agency under the Ministry of Works, Transport and Communication (Works) with a primary mandate of providing quality accommodation to Government and Public Servants as well as building consultancy services to the Government. The Agency was established in May 2002 in accordance with the Executive Agencies Act No. 30 of 1997. A list of Government Houses and Plots countrywide owned by TBA is indicated in **Table 18.**

Table 18: Number of Government Houses and Plots Countrywide as of December, 2021

	Region	Public Servant Houses	Commercial Houses		Rest Houses	State Lodges	Workshops	Plots
1	Arusha	47	77	19	2	3	1	115
2	Dar es Salaam	187	1006	85	1	8	2	387
3	Dodoma	431	528	18	16	6	1	229
4	Geita	7	48	5				16
5	Iringa	53	144	12	1	3	1	56
6	Kagera	49	198	21	2	3	2	2
7	Katavi		20			1		5
8	Kigoma	47	115	21	4	1		241
9	Kilimanjaro	33	215	21	3	1	1	62
10	Lindi	94	87	18	5	1	1	153

	Region	Public Servant Houses	Com-mercial Houses		Rest Hous-es	State Lodges	Work-shops	Plots
11	Manyara	33	58	13	5			52
12	Mara	22	128	14	1	2	1	267
13	Mbeya	20	21	24	2		1	2
14	Moro-goro	13	171	27	2		1	405
15	Mtwara	34	233	25	5	2	2	249
16	Mwanza	215	295	16	8	1	2	62
17	Njombe	27	42	9	1	3		92
18	Pwani	18	119	19	1			47
19	Rukwa	37	24	10	2			51
20	Ruvuma	22	83	18	7	1	1	25
21	Shin-yanga	40	92	18	2	3		127
22	Simiyu	13	21	8	3			18
23	Singida	21	81	17	2	1		12
24	Songwe		70					1
25	Tabora	56	74	16	2	1	1	48
26	Tanga	103	650	27	3	2	1	400
TOTAL		1,622	4,600	481	80	43	19	3,124

Source: TBA, 2021

3.4 Roads Fund Board

Road Fund Board (RFB) is responsible for disbursing funds which are used in maintenance activities related to road works for both National Roads and District Roads. Parliament of the United Republic of Tanzania enacted the roads Tolls (amendment) (No.2)

Act. 1998 which established the road Fund and the Roads Fund Board. The Act was revised in the years 2006 and is now referred to as the road and Fuel Tolls Act, CAP 220 (Revised edition 2006). The purpose of the Roads Fund is to provide an adequate and stable flow of funds for road maintenance and rehabilitation and to enhance the transparency between revenues collected from road users and the spending on the road network. It would further provide a direct linkage between the road users and the road agencies that are spending the money to provide an agreed service.

3.4.1 Road Maintenance Activities

Road maintenance means all works carried out to preserve the various components of a road in the required condition in order to provide safe and effective passage to the road users. The components (maintenance scope) include the pavement, shoulders, drainage, road signs, structures and ancillary works.

(i) Routine Maintenance

This term incorporates all the activities previously defined separately as routine and recurrent maintenance. The term routine maintenance shall therefore mean all maintenance works required continuously or at intervals on every road whatever its engineering characteristics or traffic volume, and comprises of activities such as grass cutting, drain cleaning, culvert and bridge cleaning and – maintenance, road furniture and bridge guide rails maintenance, paved road patching, edge repair, crack sealing,

and line remarking, and also unpaved road grading, shaping, and pothole repairs.

(ii) Bridge Maintenance

The term bridge maintenance means localized maintenance works on bridges that aim to repair or restore the bridge and its various components to the original specification. Upgrading by widening or improving a bridge beyond its original design shall be included under Development activities.

(iii) Spot Improvement

The term spot improvement means localized maintenance works carried out on short sections (typically 1 km or less) of roads in order to ensure a reasonable level of pass ability, and comprises of activities such as road surface repairs, embankment repairs, culvert and drainage repairs, localized road reshaping and re-gravelling, and the construction of diversion. Spot improvement is usually done due to the excessively poor condition of a road over a short section that threatens the flow of traffic. Spot improvement can be used on both paved and unpaved roads; and includes some works previously defined as emergency maintenance.

(iv) Emergency Maintenance

The term emergency maintenance means all maintenance activities required to open or repair roads, bridges and other parts of the road infrastructure after a natural or other unforeseen disaster like fire, major accidents that cause damage to the road

and natural events like floods. Repairs to roads and bridges that have deteriorated over time cannot be included in this category.

(v) Periodic Maintenance

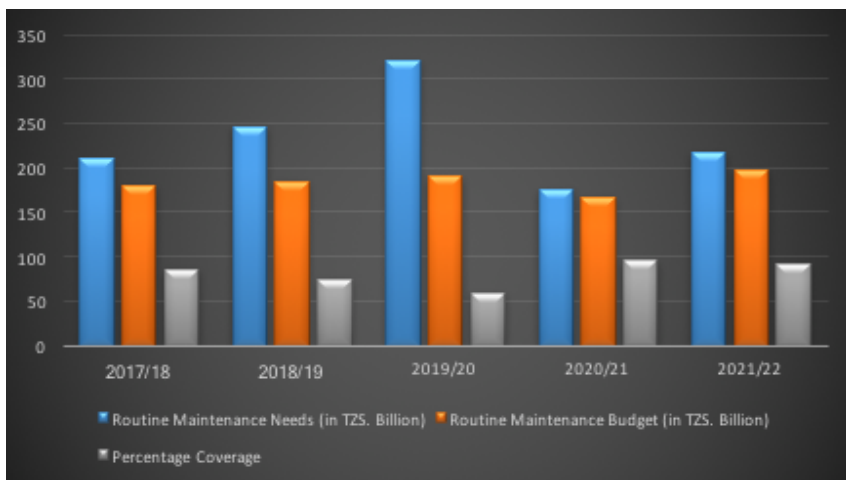
The term periodic maintenance works carried out at intervals of several years. Some activities included here are also referred to as preventative maintenance. Typical activities on paved roads include resealing, overlays of less than 100 mm, fog sprays and shoulder re-forming. Pavement layer reconstruction or the addition of a pavement layer must not be included here, but under rehabilitation. The maintenance needs for the road related activities has been always bigger compared to the budgeted funds every year which on turn create a big financing gap both routine maintenance and periodic maintenance as shown in the **Table 19** and **Table 20** respectively.

Table 19: Trend Level of Maintenance Coverage of Routine Maintenance Needs as of December, 2021

Financial Year	2017 /18	2018 /19	2019 /20	2020 /21	2021 /22
Routine Maintenance Needs (in TZS. Billion)	209.7	245.52	320.92	175.91	217.17
Routine Maintenance Budget (in TZS. Billion)	180.1	183.96	190.16	167.14	197.14
Percentage Coverage	85.9	74.0	59.4	95	90.78

Source: RFB, 2021

Figure 4: Routine Maintenance Needs Against Budget and Percentage Coverage



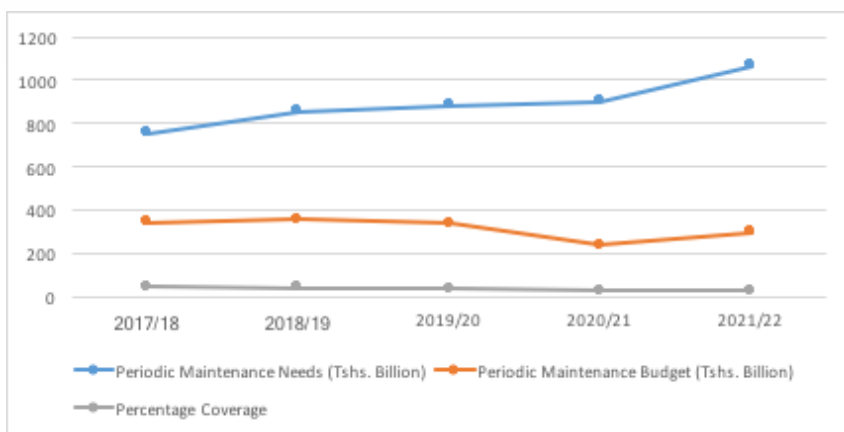
Source: RFB, 2021

Table 20: Trend of Percentage Coverage of Periodic Maintenance Needs as of December, 2021

Financial Year	2017/18	2018/19	2019/20	2020/21	2021/22
Periodic Maintenance Needs (Tshs. Billion)	751.9	854.12	883.72	899.4	1063.63
Periodic Maintenance Budget (Tshs. Billion)	342.4	354.89	336.74	237.90	297.88
Percentage Coverage	46.0	41.5	38.1	26.5	28.01

Source: RFB, 2021

Figure 5: Periodic Maintenance Needs Against Budget and Percentage Coverage



Source: RFB, 2021

3.5 Contractors Registration Board

The Contractors Registration Board (CRB) is a Government Regulatory Board under the Ministry of Works, Transport and Communication (Works) established by Act of Parliament No 17 of 1997 with the objective to register and regulate all types of Contractors and to promote the development of their capacities for the purpose of protecting consumers of construction services in Tanzania.

Table 21: Number of Registered Contractors by Type and Class as of December 2021

Type	Class										Total
	I			II	III	IV	V	VI	VII	Total	
	L	F	Total								
Building	95	51	146	79	73	346	1037	1080	1793	4554	
Civil Works	58	43	101	43	80	336	927	1639	1266	4392	
Electrical	34	29	63	31	16	132	266	144	402	1054	
Mechanical	7	19	26	9	5	36	57	68	77	278	
Specialist Building	9	7	16	8	10					34	
Specialist Civil	18	26	44	52	749					845	
Specialist Electrical	54	32	86	193	225					504	
Specialist Mechanical	62	45	107	117	257					481	
Subtotal -Permanent	337	252	589	532	1415	850	2287	2931	3538	12142	
Temporary	85	228	313	37	57	67	65	10	2	551	
GRAND TOTAL	422	480	902	569	1472	917	2352	2941	3540	12693	

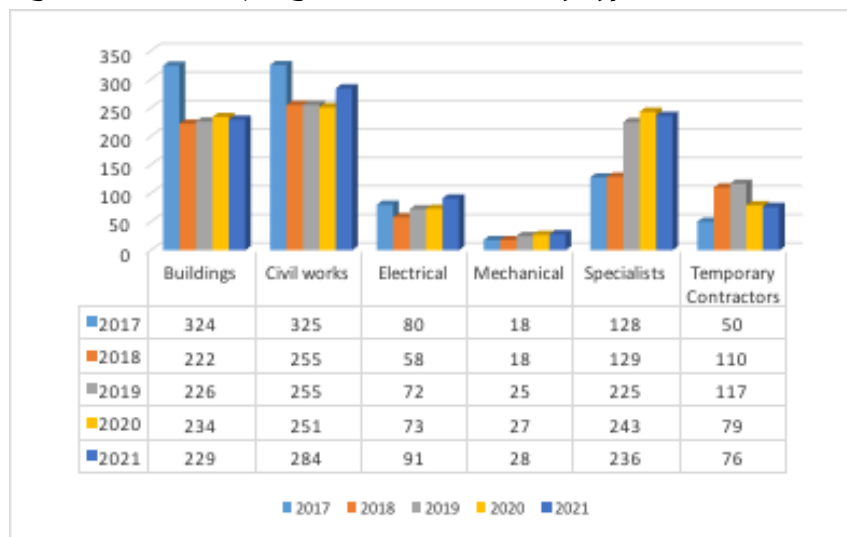
Source: CRB, 2021

Table 22: Number of Registered Contractors by Type, -Annually

Years/ Type	Buildings	Civil works	Electrical	Mechan- ical	Special- ists	Temporary Contractors
2017	324	325	80	18	128	50
2018	222	255	58	18	129	110
2019	226	255	72	25	225	117
2020	234	251	73	27	243	79
2021	229	284	91	28	236	76

Source: CRB, 2021

Figure 6: Number of Registered Contractors by Type



Source: CRB, 2021

Table 23: Cumulative Number of Registered Building Contractors by Class

Class	2017	2018	2019	2020	2021
I	219	157	164	135	146
II	53	55	59	60	79
III	65	71	77	67	73
IV	255	291	312	326	346
V	746	845	918	982	1037
VI	764	839	912	994	1080
VII	1541	1607	1649	1761	1793
TOTAL	3643	3,865	4091	4325	4554

Source: CRB, 2021

Table 24: Number of Registered Building Contractors

Class	2017	2018	2019	2020	2021
One	4	6	7	3	11
Two	3	2	4	9	19
Three	1	4	6	3	6
Four	28	22	21	23	20
Five	85	64	73	66	55
Six	93	66	73	81	86
Seven	110	58	42	49	32
TOTAL	324	222	226	234	229

Source: CRB, 2021

Table 25: Cumulative Number of Civil Contractors by Class

Class	2017	2018	2019	2020	2021
I	110	125	134	94	101
II	22	24	30	29	43
III	65	71	76	70	80
IV	244	280	301	309	336
V	666	730	805	857	927
VI	1183	1290	1397	1504	1639
VII	1145	1178	1210	1245	1266
TOTAL	3,435	3,698	3953	4108	4392

Source: CRB, 2021

3.6 Engineers Registration Board

Engineers Registration Board (ERB) is a statutory body established under the Act of Parliament No. 15 of 1997 as amended by the Engineers Registration Act No. 24 of 2007.

The function of ERB is to regulate and monitor engineering practice in Tanzania through promotion of engineering excellence among local engineers, engineering technicians and engineering consulting firms with a view to enhance their competitiveness and professionalism in the engineering practice”

**Table 26: Number of Engineering Consulting Firms
Registration by Category as of December, 2021**

Category	2017	2018	2019	2020	2021
Local firm	13	10	10	17	8
Foreign Firm	9	9	6	5	3
TOTAL	22	19	16	22	11

Source: ERB, 2021

Table 27: Registration of Engineers by Discipline as of December, 2021

Discipline	Category								Total	%
	GIE	GE	IE	PE	TPE	CE	TCE			
Civil	270	7316	189	4104	1732	332	116	14059	42.63%	
Mechanical/Industrial/ Automobile	156	2979	86	986	260	41	9	4517	13.70%	
Electrical	149	3465	140	1099	236	47	13	5149	15.61%	
Electronics & Telecommuni- cations	104	1773	44	313	91	12	2	2339	7.09%	
Environmental	27	828	22	302	24	18	3	1224	3.71%	
Mining/Mineral Processing/ Petroleum/Gas	-	1251	2	273	85	4	2	1617	4.90%	
Aeronautical	-	31	-	6	-	-	-	37	0.11%	
Agricultural/Irrigation	2	1161	1	204	23	3	2	1396	4.23%	
Chemical & Process	1	619	2	170	18	3	1	814	2.47%	
Marine	16	16	5	26	6	-	-	69	0.21%	
Computer & IT	-	1076	-	101	20	1	-	1198	3.63%	
Textile	-	31	-	4	2	-	-	37	0.11%	
Geotechnical	-	60	-	20	114	5	1	200	0.61%	
Food and Biochemical	-	89	-	15	-	-	-	104	0.32%	
Electromechanical	-	147	1	56	11	7	-	222	0.67%	
TOTAL	725	20842	492	7679	2622	473	149	32,982	100%	

Source: ERB, 2021

Table 28: Registered Engineering Consulting Firms as of December, 2021

Category 1: Local Engineering Consulting Firms

S/N	Category	Number of Registered Firms					Total
		2017	2018	2019	2020	2021	
1	Civil/Structural	8	5	4	11	4	32
2	Electrical	4	1	3	1	-	9
3	Mechanical	1	0	3	4	1	9
4	Water Resources	0	0	0		2	2
5	Electronics/ Telecoms	0	1	0		-	1
6	Mining	0	0	0		-	0
7	ICT	0	0	0		-	0
8	Environmental	0	3	0	1	1	5
TOTAL		13	10	10	17	8	58

Source: ERB, 2021

Category 2: Foreign Engineering Consulting Firms

S/N	Category	Number of Registered Firms					Total
		2017	2018	2019	2020	2021	
1	Civil/Structural	7	8	5	2	3	25
2	Electrical	0	1	1	2	-	4
3	Mechanical	0	0	0		2	2
4	Water Resources	1	0	0		-	1
5	Electronics/Telecoms	0	0	0	1	-	1
6	Mining	0	0	0		-	0
7	ICT	0	0	0		-	0
8	Environmental	1	0	0		-	1
TOTAL		9	9	6	5	5	34

Source: ERB, 2021

Category 3: Total Local and Foreign Firms, (2017 -2021)

S/N	Category	Number of Registered Firms					Total
		2017	2018	2019	2020	2021	
1	Civil/Structural	15	13	9	13	7	57
2	Electrical	4	2	4	3	-	13
3	Mechanical	1	0	3	4	3	11
4	Water Resources	1	0	0		2	3
5	Electronics/Telecoms	0	1	0	1	-	2
6	Mining	0	0	0		-	0
7	ICT	0	0	0		-	0
8	Environmental	1	3	0	1	1	6
TOTAL		22	19	16	22	13	92

Source: ERB, 2021

3.7 Architects and Quantity Surveyors Registration Board (AQRB)

Table 29: Professional Registered Architects, Interior Designers, Landscape Architect, Quantity -Surveyors, Building Surveyors Construction Managers, Project Manager and Practicing Firms – Cumulatively as of 31st December, 2021

Year	Architects			Quantity Surveyors		Landscape Architects		Interior Designers		Architectural Technologists		Construction Managers		Project Managers				
	Local	Foreign	TOTAL	Local	Foreign	Local	Foreign	Local	Foreign	Local	Foreign	Local	Foreign	Local	Foreign			
			TOTAL													TOTAL		
2017	422	30	452	400	2	402	15		15	2	2	4	4	5	5	20	2	2
2018	445	31	476	451	2	453	19		19	4	4	9	9	9	9	27	3	3
2019	486	30	516	497	2	499	21		21	4	4	10	11	11	11	34	3	3
2020	507	30	537	543	2	545	23		23	5	5	11	11	11	11	35	3	3
2021	549	31	580	637	2	639	24	-	24	6	6	17	15	15	15	35	6	6

Source: AQRB, 2021

Table 30: Registered Graduate Architects; Graduate Interior Design; Graduate Landscape Architects; Graduate Quantity Surveyors; Graduate ;Building Surveyors; Graduate Construction Managers; Architectural Technicians; Architectural Draughtsmen and Graduate Architectural Technologists

Year	Graduate Architects	Graduate Interior Design	Graduate Landscape Architects	Graduate Quantity Surveyors	Graduate Building Surveyors	Graduate Construction Managers	Architectural Technicians	Architectural Draughtsmen	Graduate Architectural Technologists
2017	144	16	7	170	22	28	19	17	24
2018	166	18	7	176	23	28	21	18	27
2019	179	16	10	198	23	27	23	19	50
2020	213	26	18	265	25	31	23	19	76
2021	247	34	21	380	25	33	23	19	99

Source: AQRB, 2021

Table 31: Firms Registered Architectural, Quantity Surveying, Building Surveying and Interior Design: Cumulatively as on 31st December, 2021

Year	Architectural Firms			Quantity Surveyors Firms			Building Surveyors Firms			Interior Design Firms		
	local	foreign	TOTAL	local	foreign	TOTAL	local	foreign	TOTAL	local	foreign	TOTAL
2019	243	9	252	132	1	133	1		1	1		1
2020	255	9	264	139	1	140	1		1	1		1
2021	266	9	275	146	1	147	1		1	1		1

Source: AQRB, 2021

3.8 National Construction Council

National Construction Council (NCC) is a body corporate established under the National Construction Council Act of 2008, Chapter 162. The functions of the Council is to promote and provide strategic leadership for the growth, development and expansion of the construction industry in Tanzania with emphasis on the development of the local capacity for social-economic development and competitiveness in the changing global environment.

Table 32: Labour/Material Indices

Base Date	Unskilled Labour	Cement	Reinforcement	Aggregate	Z'- Purlin	Corrugated Iron Sheets	Soft wood	Hard wood	Emulsion Paint	Galvanized Steel Pipes	Fuel-Diesel
January, 2020	22358.06	3563.35	1938.61	2473.65	2338.97	361.43	3705.57	5261.88	534.21	3705.13	9426.67
February	22358.06	3563.35	1938.61	2473.65	2338.97	361.43	3705.57	5261.88	534.21	3705.13	9755.56
March	22358.06	3484.16	1938.61	2473.65	2338.97	361.43	3705.57	5261.88	534.21	3705.13	9568.89
April	22358.06	3484.16	1938.61	2473.65	2338.97	361.43	3705.57	5261.88	534.21	3705.13	8840.00

Base Date	Unskilled Labour	Cement	Reinforcement	Aggregate	Z'-Purlin	Corrugated Iron Sheets	Soft wood	Hard wood	Emulsion Paint	Galvanized Steel Pipes	Fuel-Diesel
May	22358.06	3484.16	1938.61	2473.65	2338.97	361.43	3705.57	5261.88	534.21	3705.13	8204.44
June	22358.06	3484.16	1938.61	2473.65	2338.97	361.43	3705.57	5261.88	534.21	3705.13	6871.11
July	22358.06	3484.16	1938.61	2473.65	2338.97	361.43	3705.57	5261.88	534.21	3705.13	7626.67
August	22358.06	3484.16	1938.61	2473.65	2338.97	361.43	3705.57	5261.88	534.21	3705.13	7933.33
September	22358.06	3484.16	1938.61	2473.65	2338.97	361.43	3705.57	5261.88	534.21	3705.13	7968.89
October	22358.06	3510.56	1938.61	2473.65	2338.97	361.43	3705.57	5261.88	534.21	3705.13	7902.22
November	22358.06	3510.56	1938.61	2473.65	2338.97	361.43	3705.57	5261.88	534.21	3705.13	7706.67
December	22358.06	3510.56	1938.61	2473.65	2338.97	361.43	3705.57	5261.88	534.21	3705.13	7497.78
January, 2021	22358.06	3510.56	1938.61	2473.65	2338.97	361.43	3705.57	5261.88	534.21	3705.13	7533.33
February	22358.06	3510.56	2132.47	2473.65	2338.97	361.43	3705.57	5261.88	608.10	3705.13	8128.89
March	22358.06	3510.56	2132.47	2473.65	2338.97	361.43	3705.57	5261.88	608.10	3705.13	8493.33

Base Date	Unskilled Labour	Cement	Reinforcement	Aggregate	Z'-Purlin	Corrugated Iron Sheets	Soft wood	Hard wood	Emulsion Paint	Galvanized Steel Pipes	Fuel-Diesel
April	22358.06	3510.56	2132.47	2473.65	2338.97	361.43	3705.57	5261.88	608.10	3705.13	8871.11
May	22358.06	3510.56	2132.47	2473.65	2338.97	361.43	3705.57	5261.88	608.10	3705.13	9057.78
June	22358.06	3510.56	2132.47	2473.65	2338.97	361.43	3705.57	5261.88	608.10	3705.13	9213.33
July	22358.06	3510.56	2132.47	2473.65	2338.97	361.43	3705.57	5261.88	608.10	3705.13	9844.44
August	22358.06	3510.56	2132.47	2473.65	2338.97	361.43	3705.57	5261.88	608.10	3705.13	10004.44
September	22358.06	3510.56	2132.47	2473.65	2338.97	361.43	3705.57	5261.88	608.10	3705.13	10004.44
October	22358.06	3756.24	2200.32	2355.85	2328.21	505.67	6239.25	6998.49	608.10	2844.42	10048.89
November	22358.06	3756.24	2200.32	2355.85	2328.21	505.67	6239.25	6998.49	804.61	2844.42	9968.89
December	22358.06	3756.24	2200.32	2355.85	2701.52	573.02	6239.25	6998.49	804.61	2844.42	10631.11
January 2022	22358.06	3756.24	2200.32	2355.85	2701.52	573.02	6239.25	6998.49	804.61	2844.42	10631.11

Source: NCC, 2021

3.9 Institute of Construction Technology (ICoT)

The Ministry of Works and Transport (Works) has established the Institute of Construction Technology (ICoT) registered with NACTE with registration number REG / SAT / 035. The institute was established by merging the former Morogoro Works Training Institute (MWTI) with the Appropriate Technology Training Institute (ATTI) of Mbeya under the Ministry of Works and Transport (Works). The headquarters of this Institute (Main Campus) is located in Morogoro where the Morogoro Works Training Institute (MWTI) and the Branch (Campus) are located in Mbeya.

3.9.1 Number of Students Enrolled in the Academic Year 2020/21

(i) Basic Certificate Courses (NTA LEVEL 4)

S/N	Course Title	Number of Students		
		Male	Female	Total
1	Civil Engineering	8	2	10
2	Electrical Engineering	22	0	22
3	Mechanical Engineering	9	0	9
TOTAL		39	2	41

Source: ICoT, 2021

(ii) Certificate Courses (NTA LEVEL 5)

S/N	Course Title	Number of Students		
		Male	Female	Total
1	Civil Engineering	7	1	8
2	Electrical Engineering	4	3	7
3	Mechanical Engineering	8	2	10
TOTAL		19	6	25

Source: ICoT, 2021

(iii) Vocational Education and Training (VET)

• First Year

S/N	Course Title	Number of Students		
		Male	Female	Total
1	Auto Electric	45	1	46
2	Civil Draughting	5	0	5
3	Electrical Installation	48	11	59
4	Masonry and Bricklaying	1	0	1
5	Motor Vehicle Mechanics	34	0	34
6	Plumbing and Pipe Fittings	19	19	38
7	Road Construction	10	2	12
8	Welding and Metal Fabrication	3	0	3
TOTAL		165	33	198

Source: ICoT, 2021

• **Second Year**

S/N	Course Title	Number of Students		
		Male	Female	Total
1	Auto Electric	45	2	47
2	Civil Draughting	6	2	8
3	Electrical Installation	77	12	89
4	Masonry and Bricklaying	7	0	7
5	Motor Vehicle Mechanics	23	0	23
6	Plumbing and Pipe Fittings	14	11	25
7	Road Construction	4	2	6
8	Welding and Metal Fabrication	4	0	4
TOTAL		180	29	209

Source: ICoT, 2021

• **Short Courses**

S/N	Course Title	Number of Students		
		Male	Female	Total
1	Labour Based Technology	0	0	0
2	Basic Motor Vehicle Driving	121	22	143
3	Passengers Service Vehicle (PSV)	0	0	0
4	Plant Operator	0	0	0
5	Plumbing	0	0	0
6	Basic Motor Cycle Driving	0	0	0
		0	0	0
TOTAL		121	22	143

Source: ICoT, 2021

CHAPTER FOUR

LOCAL ROADS

4.1 Tanzania Rural and Urban Roads Agency (TARURA)

The management of District Roads that is, Collector, Feeder and Community roads is under the jurisdiction of President's Office Regional Administration and Local Government (PO-RALG). The District Roads are managed by the recently established Tanzania Rural and Urban Roads Agency (TARURA). This Agency has Council Office in 184 Local Government Authorities which are coordinated by 26 Regional coordination Offices in each Region. The Council Offices are responsible for inventory and condition surveys, planning, prioritization, project design, tendering and supervision of District road maintenance and development works.

The President's Office Regional Administration and Local Government has an oversight function of preparing policies and strategies in cooperation with key stakeholders in the sector, as well as being responsible for coordination and monitoring of the district roads activities in the councils and to provide/coordinate capacity building and advisory support for the councils. Details for Local Road Network are indicated in **Table 33**.

Table 33: Local Roads Network Length (km) as of December, 2021

S/No		Category	Road Type	Length (Km)	Length out of total National and Local Roads (percent)
	Local Roads	Collector	Paved	1,299.9	0.9
			Unpaved	55,364.18	38.33
		Community	Paved	19.6	0.01
			Unpaved	18,779.89	13
		Feeder	Paved	1,154.04	0.8
			Unpaved	67,812.16	46.95
TOTAL LOCAL ROADS				144,429.78	

Source: ARURA, 2021

Table 34: Employments Generated During implementation of Development Projects as of December, 2021

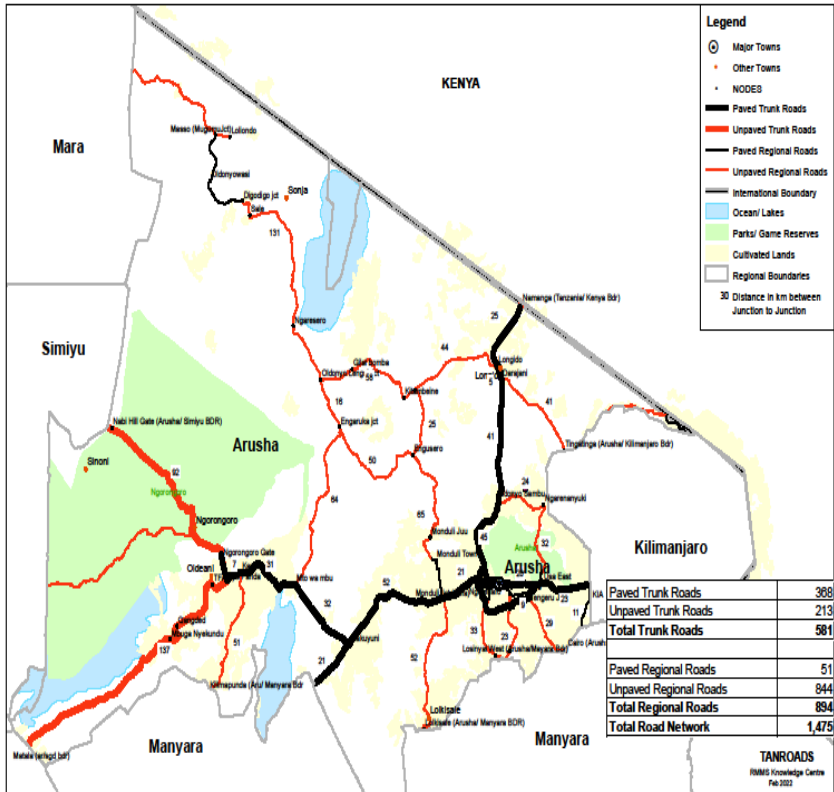
Year	Agency	Project name	Number of employments		
			Male	Female	Total
2017	TANROADS				
		Trunk Roads	27,197	3,699	30,896
		Regional Roads			
	TEMESA	Ferry Projects	75	30	105
	TBA	Building Project	1367	257	1624
TOTAL					32,625
2018	TANROADS	Trunk Roads	13,795	706	14,501
		Regional Roads			
		Airports			
	TEMESA	Ferry Projects	161	33	194
	TBA	Building Project	1015	204	1219
TOTAL					15,914

Year	Agency	Project name	Number of employments		
2019	TANROADS	Trunk Roads	13,686	1,075	14,761
		Regional Roads	3,434	560	3,994
		Airports	2,212	367	2,579
	TEMESA	Ferry Projects	360	101	461
	TBA	Building Project	1,480	310	1,790
TOTAL					23,585
2020	TANROADS	Trunk Roads	1338	134	1,472
		Regional Roads	7,655	1270	8,925
		Airports	117	17	134
	TEMESA	Ferry Projects	194	69	263
	TBA	Building Project	727	341	1,068
TOTAL					11,862
2021	TANROADS	Trunk Roads	11,267	898	12,165
		Regional Roads	6,090	1,149	7,239
		Airports	695	66	761
	TEMESA	Ferry Projects	98	35	133
	TBA	Building Project	2684	1025	3709
TOTAL					24,007

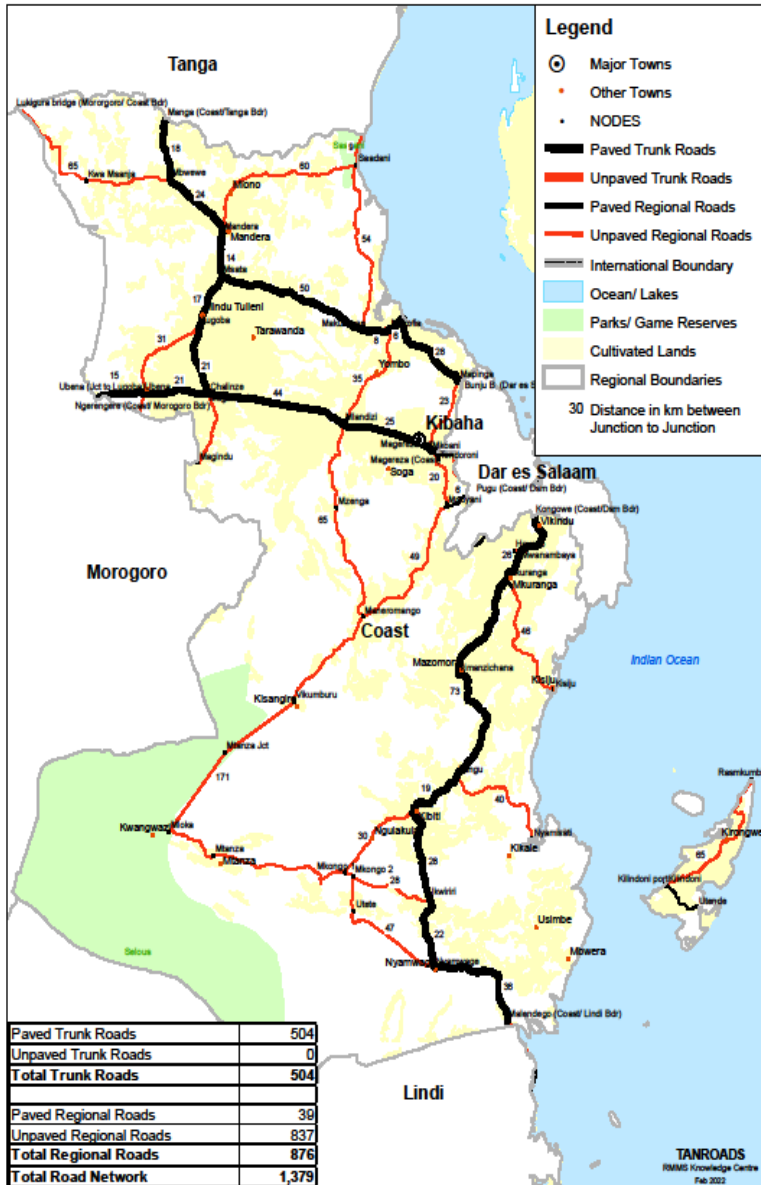
Source: TANROADS/TEMESA/TBA, 2021

ANNEX 2:
Road Network Maps by Region as of February, 2022

ARUSHA REGION ROADS NETWORK



COAST REGION ROADS NETWORK

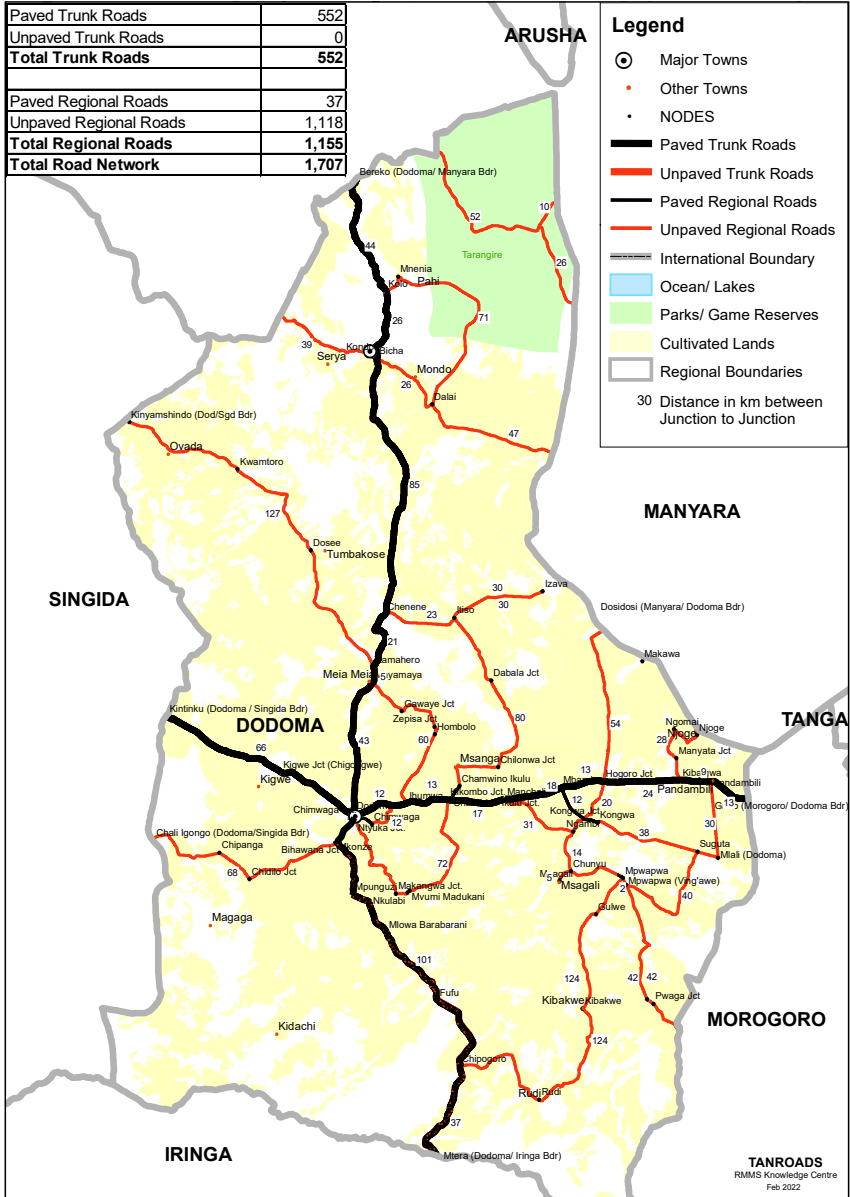


DODOMA REGION ROADS NETWORK

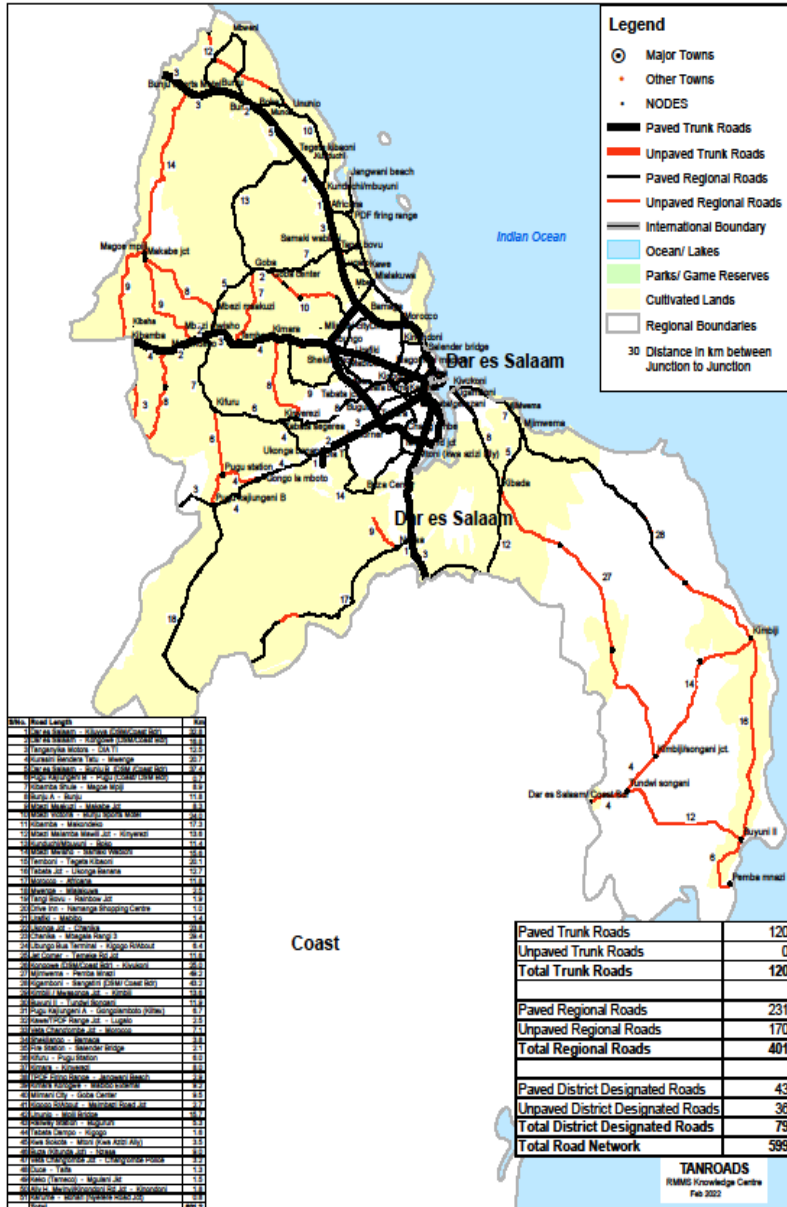
Paved Trunk Roads	552
Unpaved Trunk Roads	0
Total Trunk Roads	552
Paved Regional Roads	37
Unpaved Regional Roads	1,118
Total Regional Roads	1,155
Total Road Network	1,707

Legend

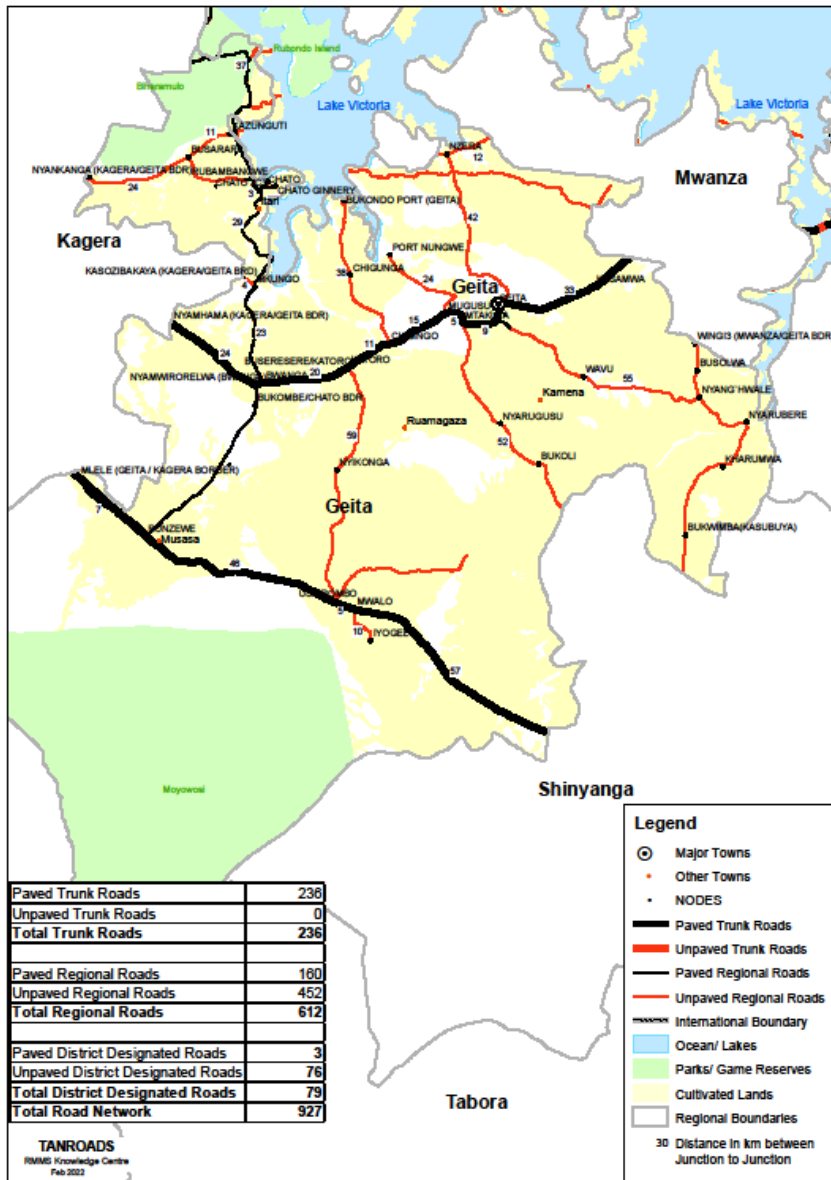
- ⊙ Major Towns
- Other Towns
- NODES
- Paved Trunk Roads
- Unpaved Trunk Roads
- Paved Regional Roads
- Unpaved Regional Roads
- International Boundary
- Ocean/ Lakes
- Parks/ Game Reserves
- Cultivated Lands
- Regional Boundaries
- 30 Distance in km between Junction to Junction



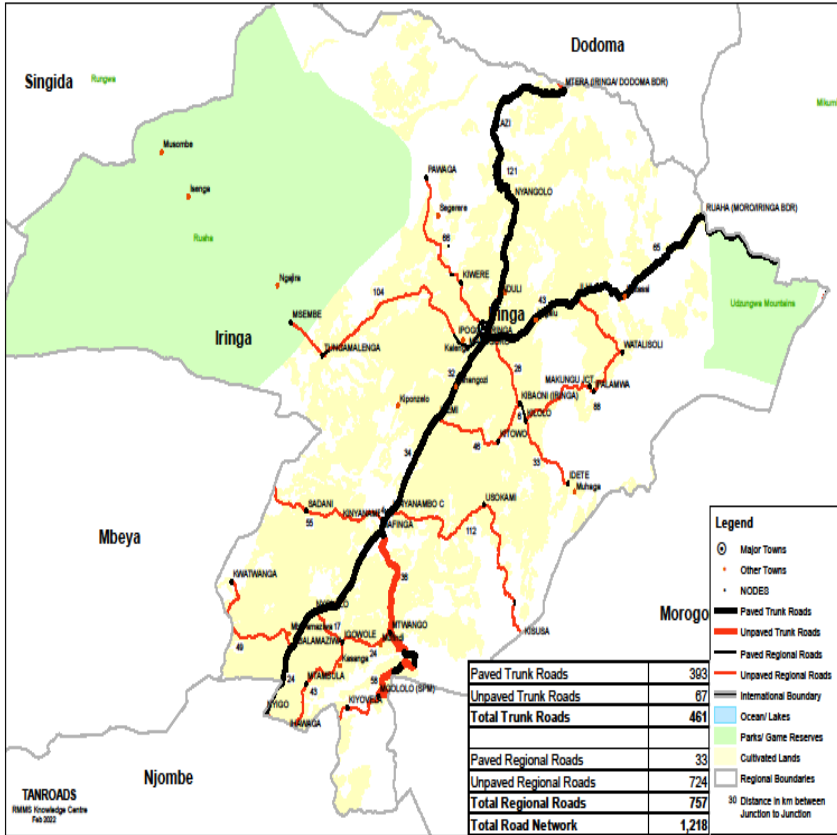
DAR ES SALAAM REGION ROADS NETWORK



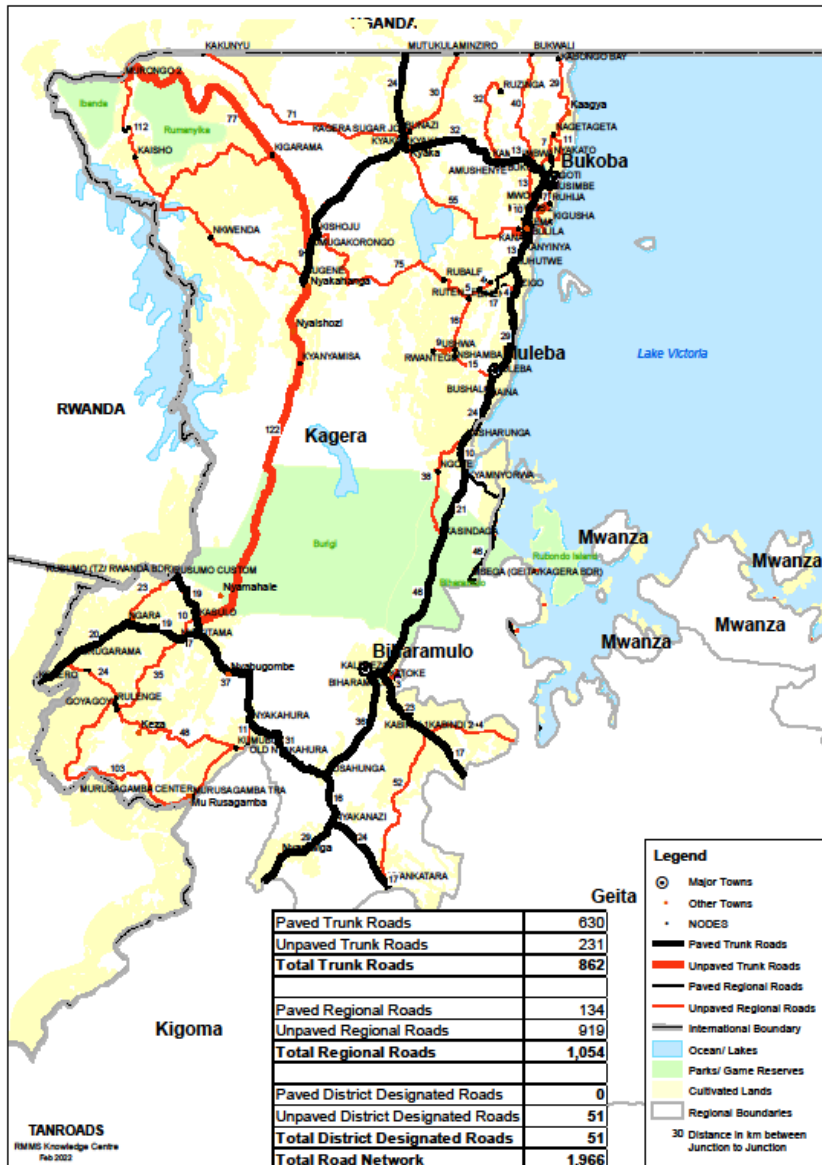
GEITA REGION ROADS NETWORK



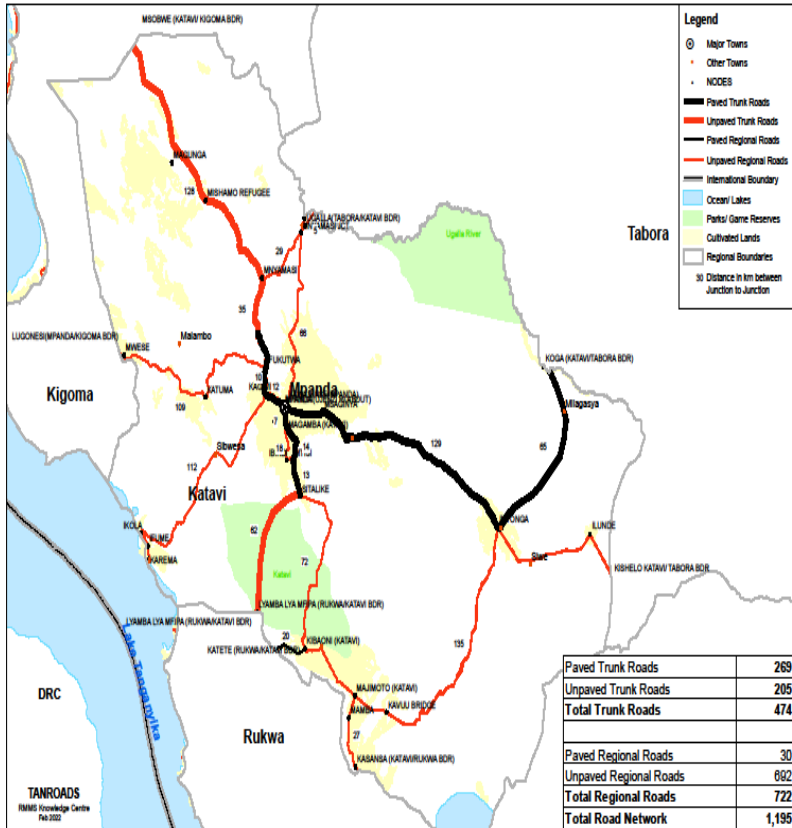
IRINGA REGION ROADS NETWORK



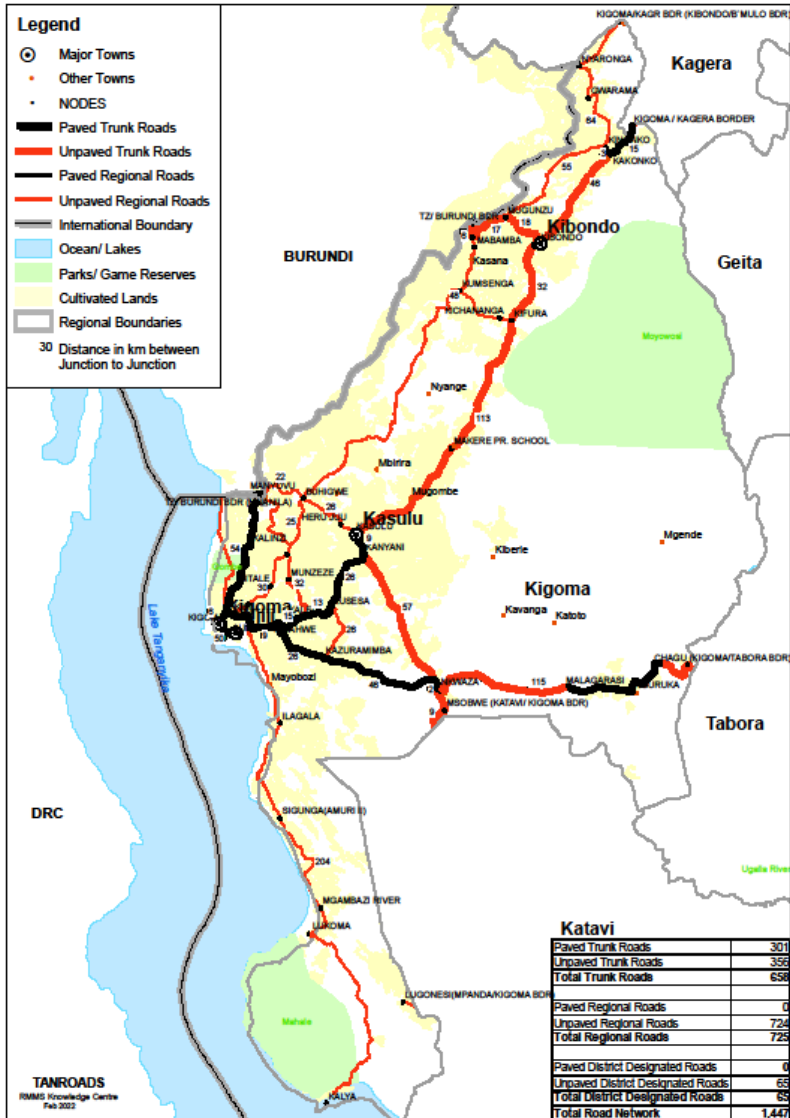
KAGERA REGION ROADS NETWORK



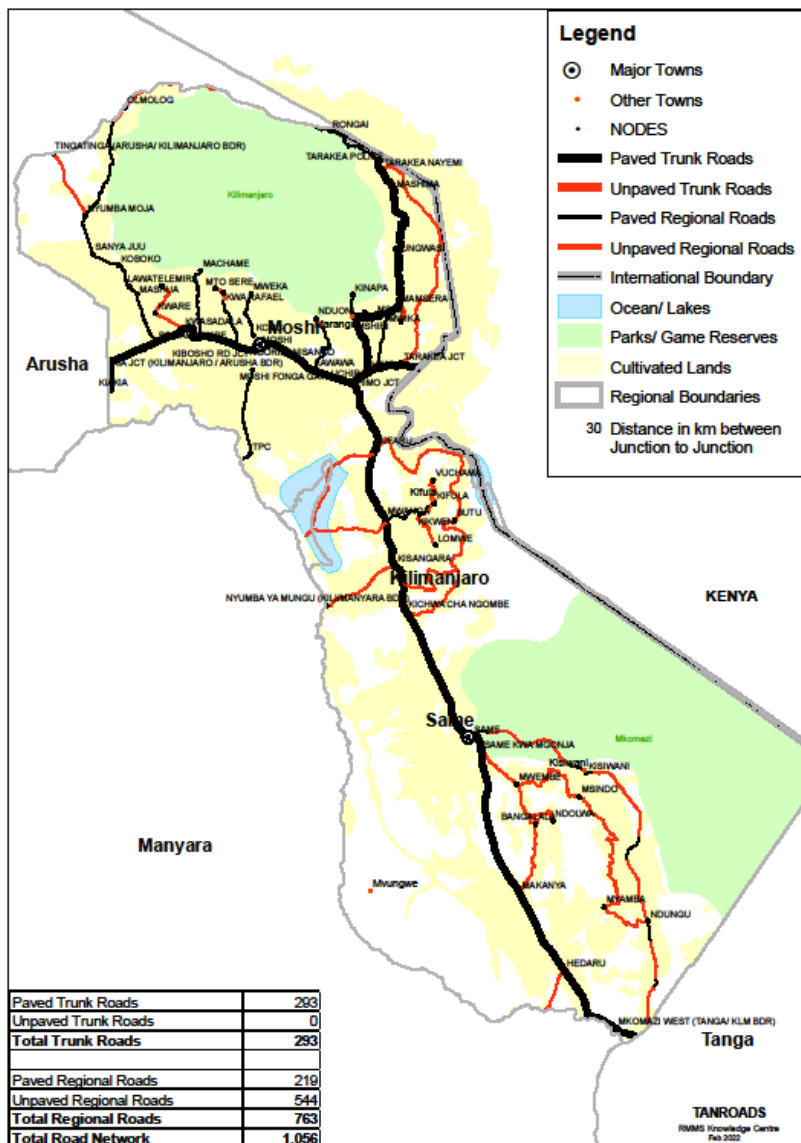
KATAVI REGION ROADS NETWORK



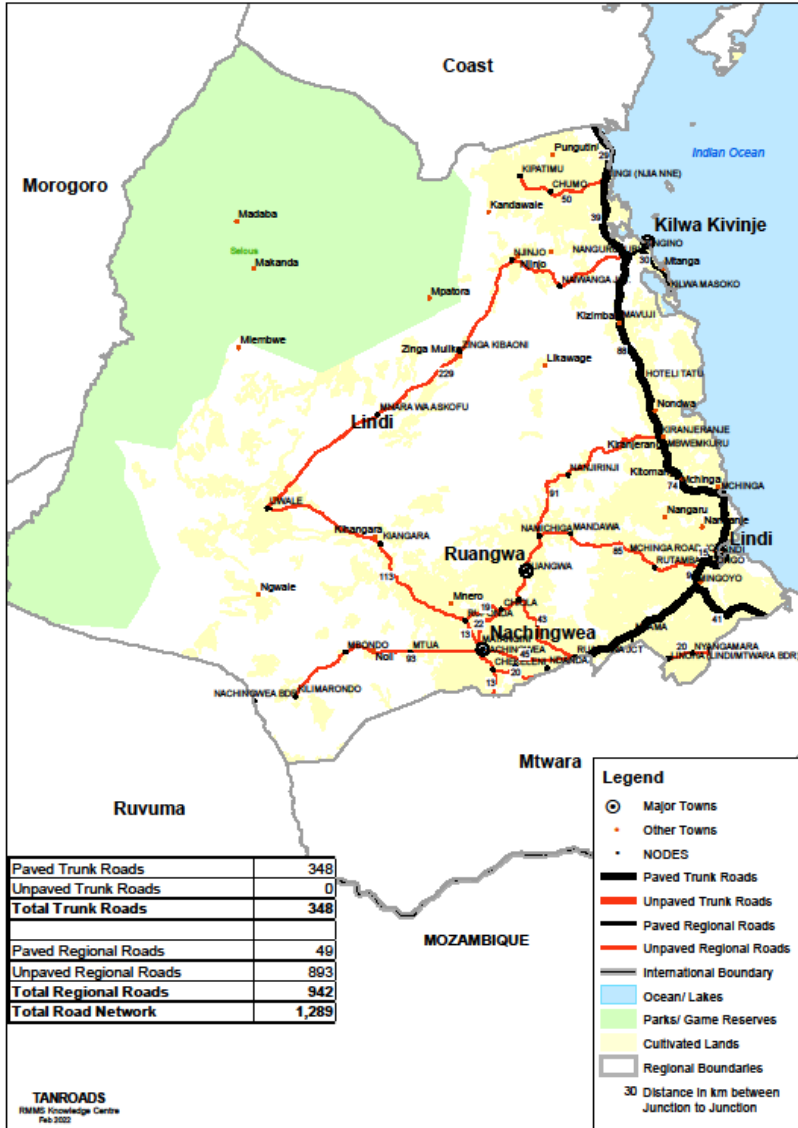
KIGOMA REGION ROADS NETWORK



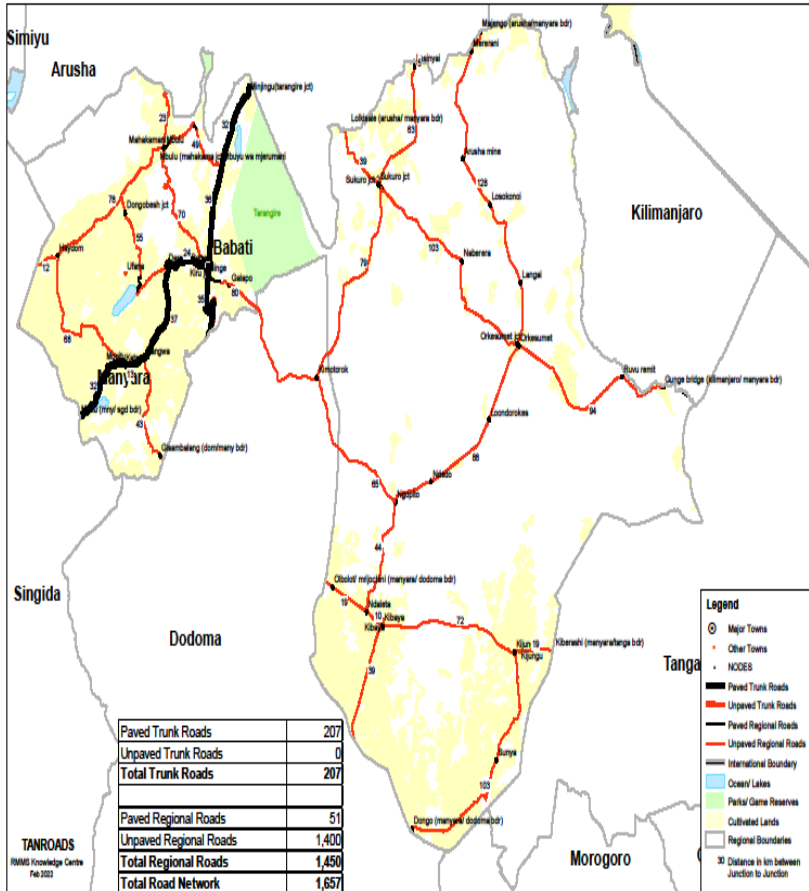
KILIMANJARO REGION ROADS NETWORK



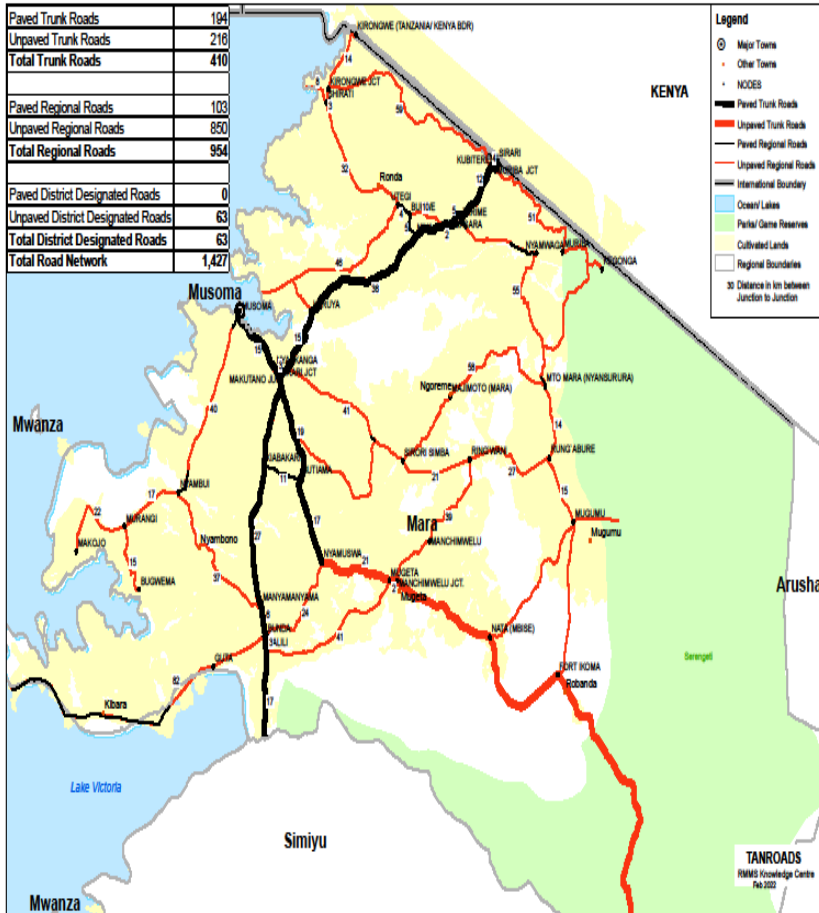
LINDI REGION ROADS NETWORK



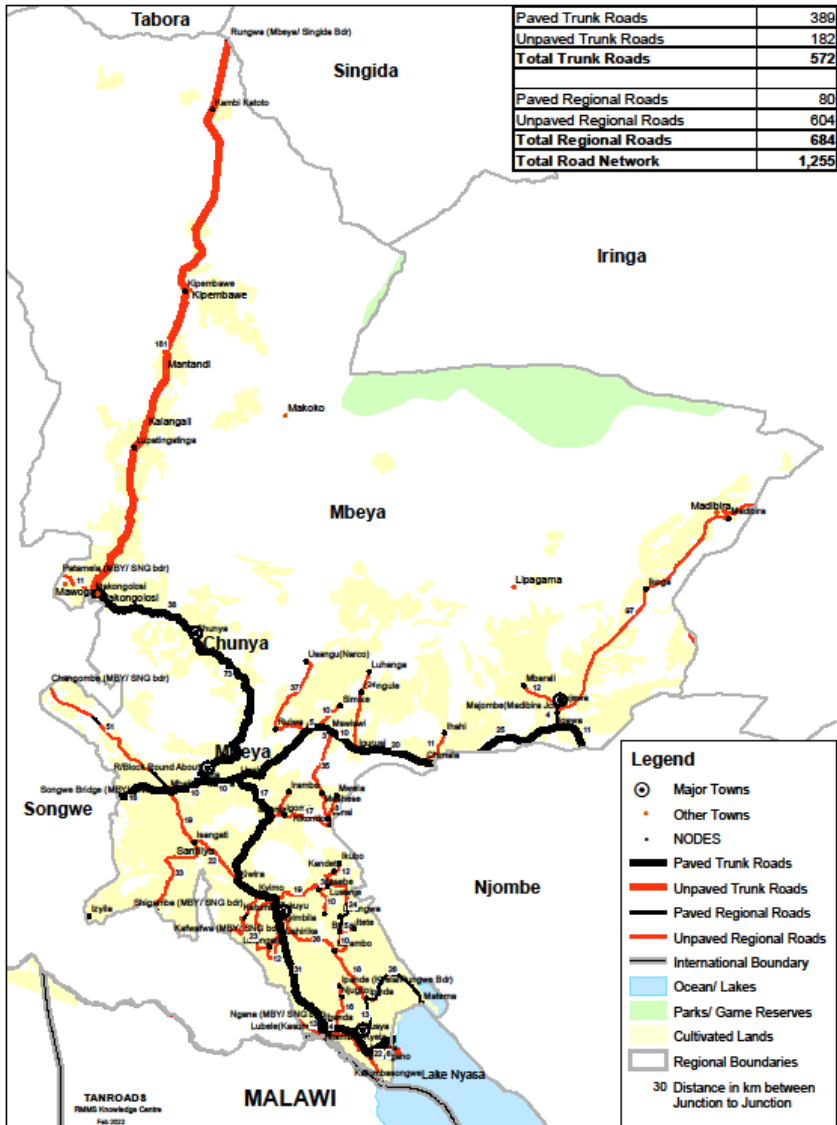
MANYARA REGION ROADS NETWORK



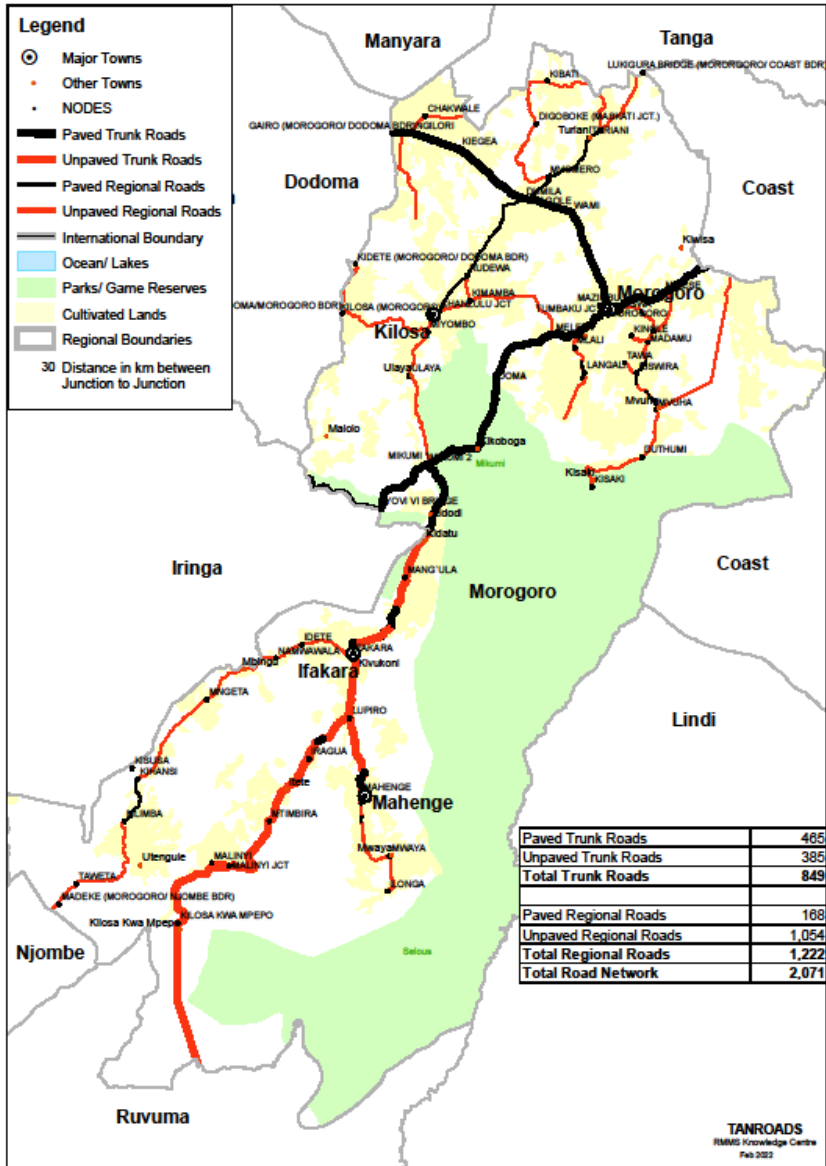
MARA REGION ROADS NETWORK



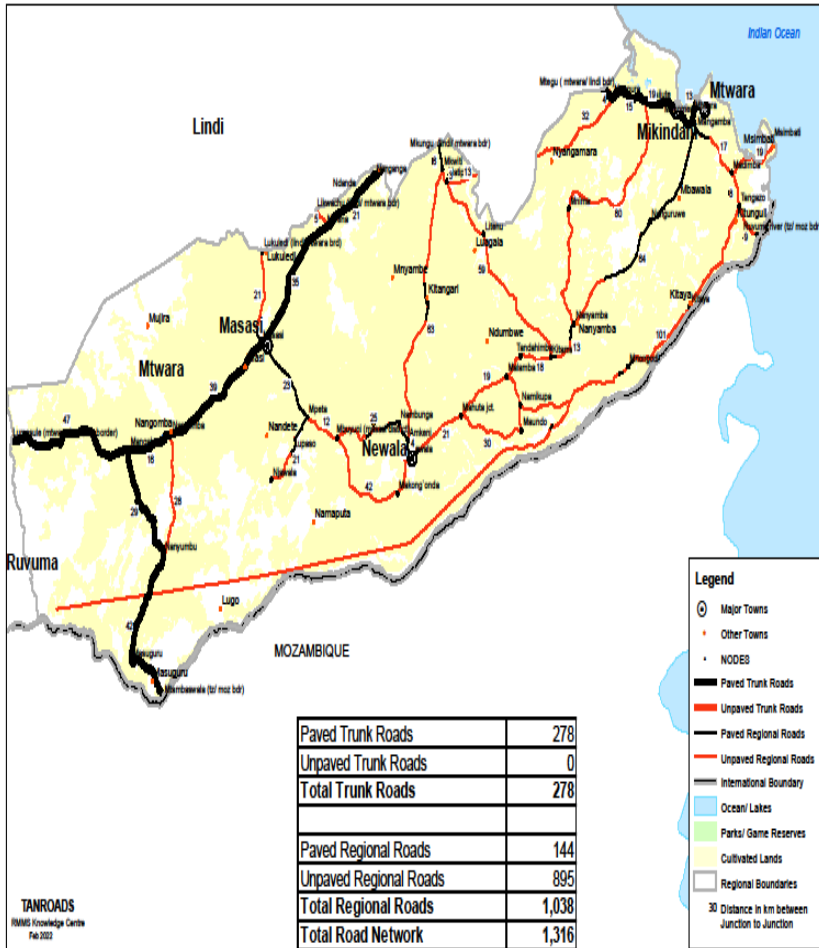
MBEYA REGION ROADS NETWORK



MOROGORO REGION ROADS NETWORK



MTWARA REGION ROADS NETWORK

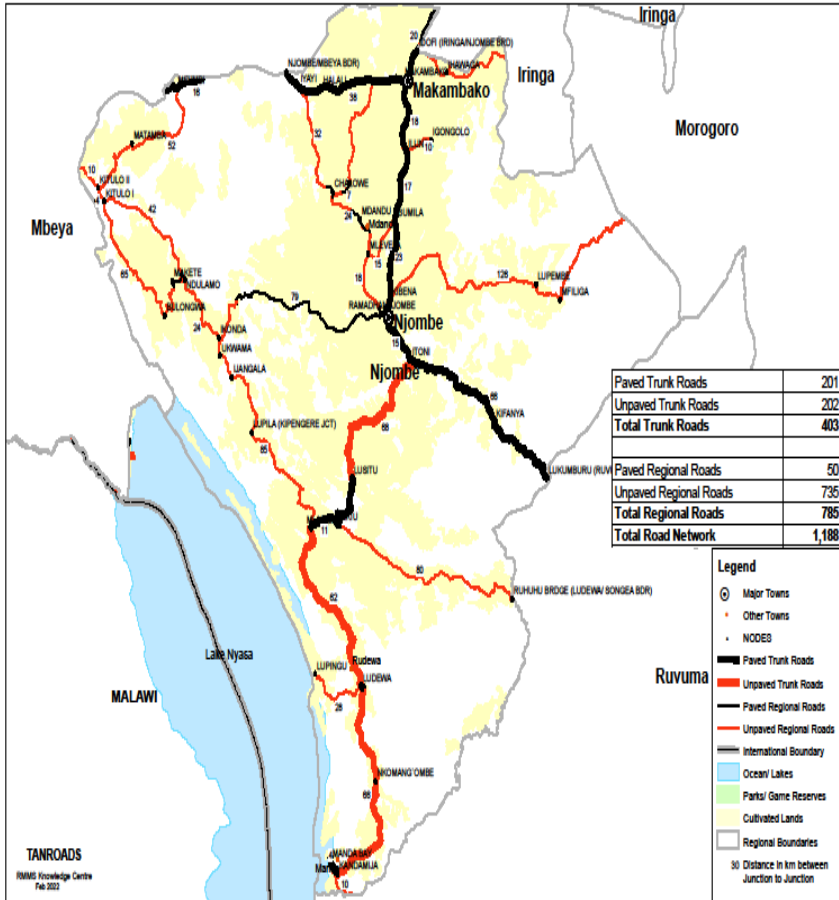


MWANZA REGION ROADS NETWORK

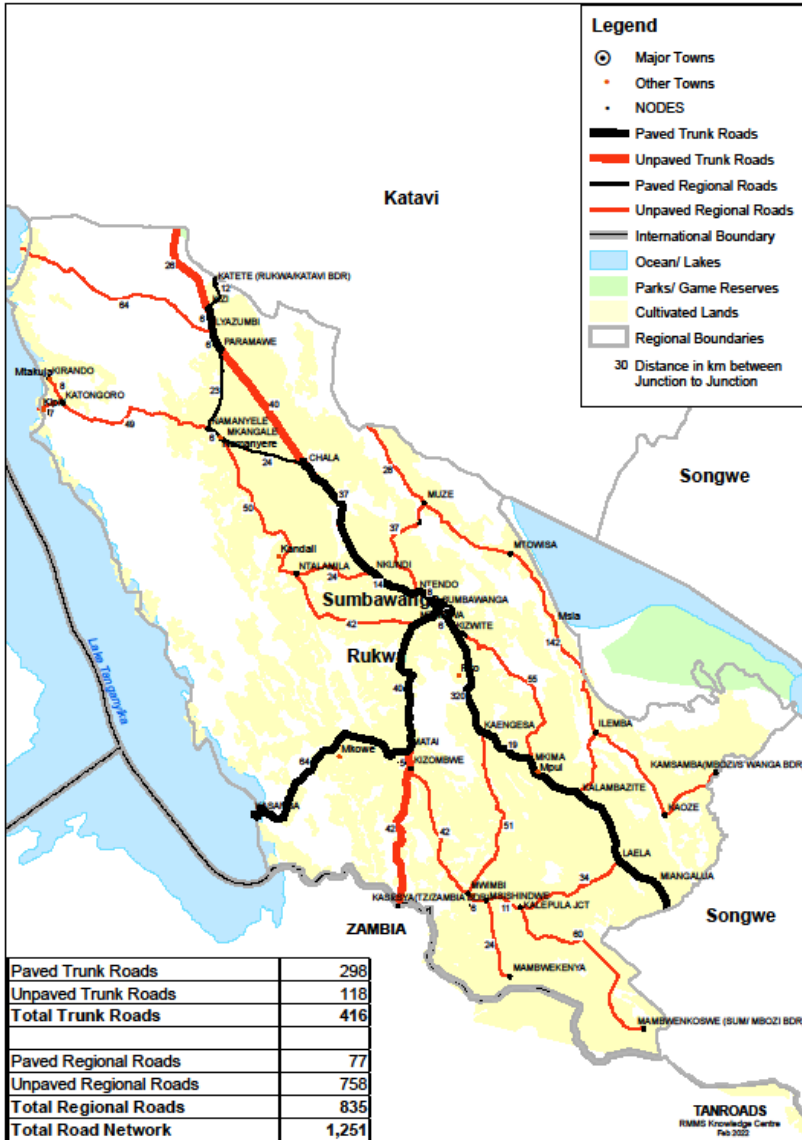
Paved Trunk Roads	262
Unpaved Trunk Roads	0
Total Trunk Roads	262
Paved Regional Roads	28
Unpaved Regional Roads	835
Total Regional Roads	861
Paved District Designated Roads	0
Unpaved District Designated Roads	23
Total District Designated Roads	23
Total Road Network	1,146



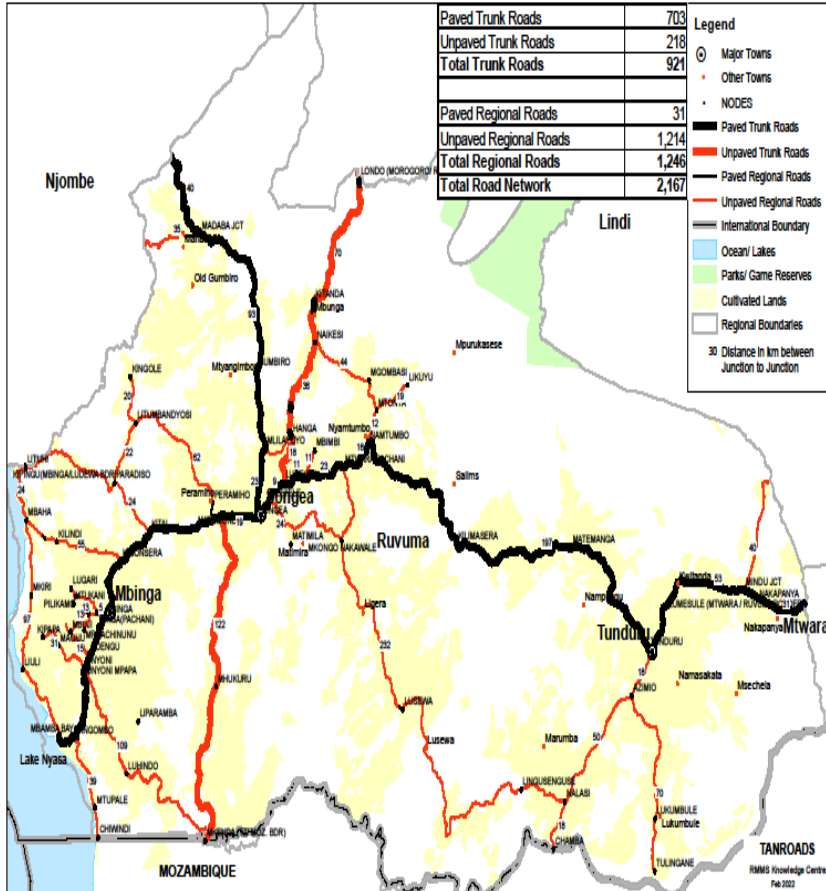
NJOMBE REGION ROADS NETWORK



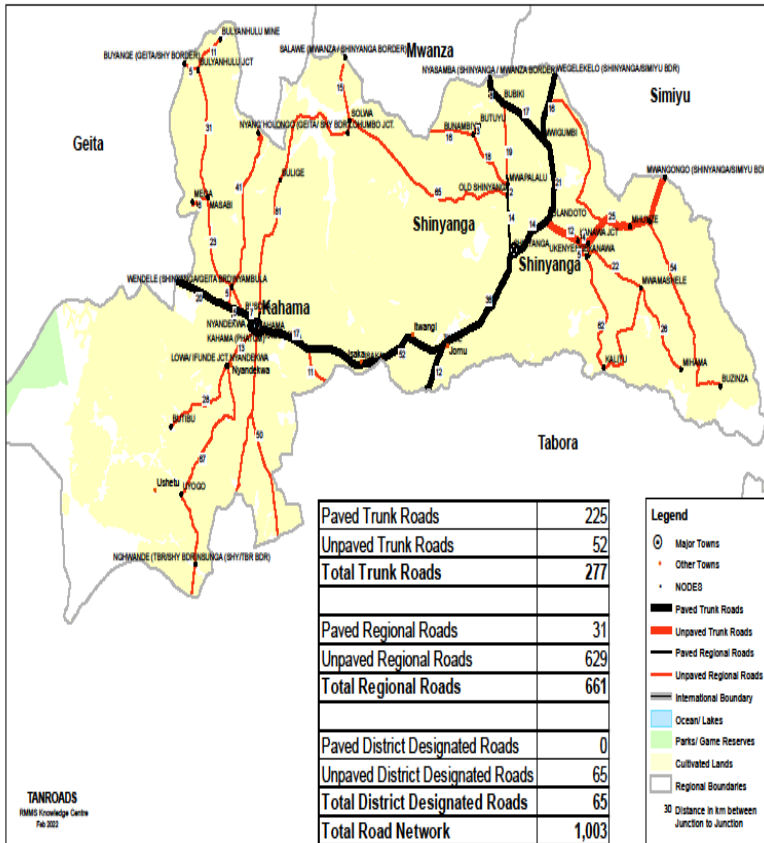
RUKWA REGION ROADS NETWORK



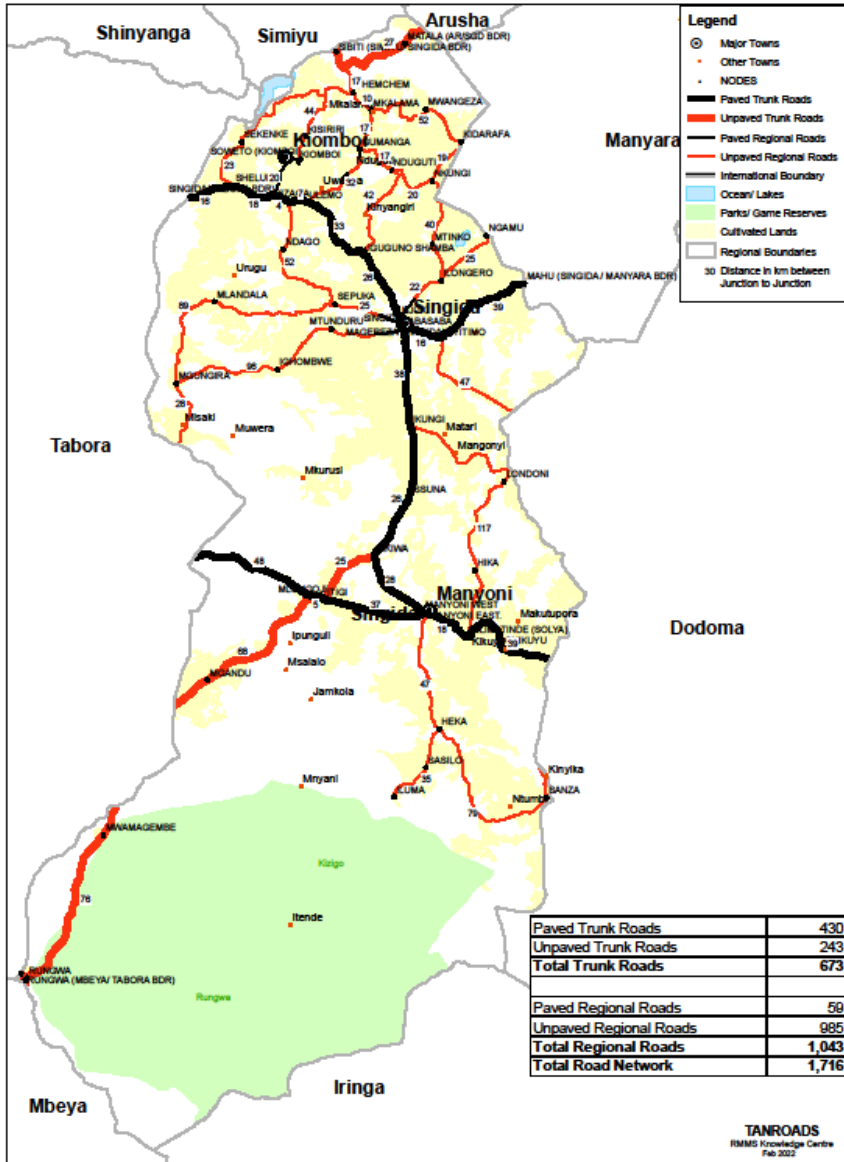
RUVUMA REGION ROADS NETWORK



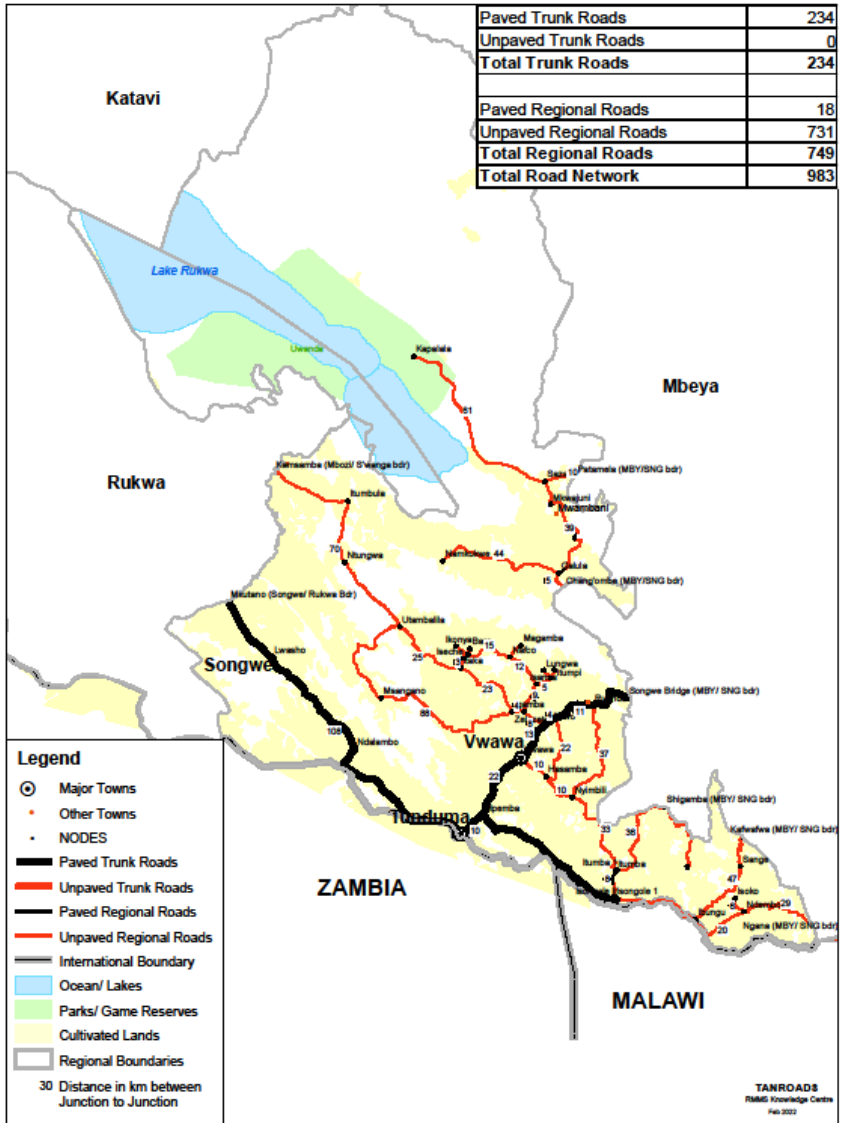
SHINYANGA REGION ROADS NETWORK



SINGIDA REGION ROADS NETWORK

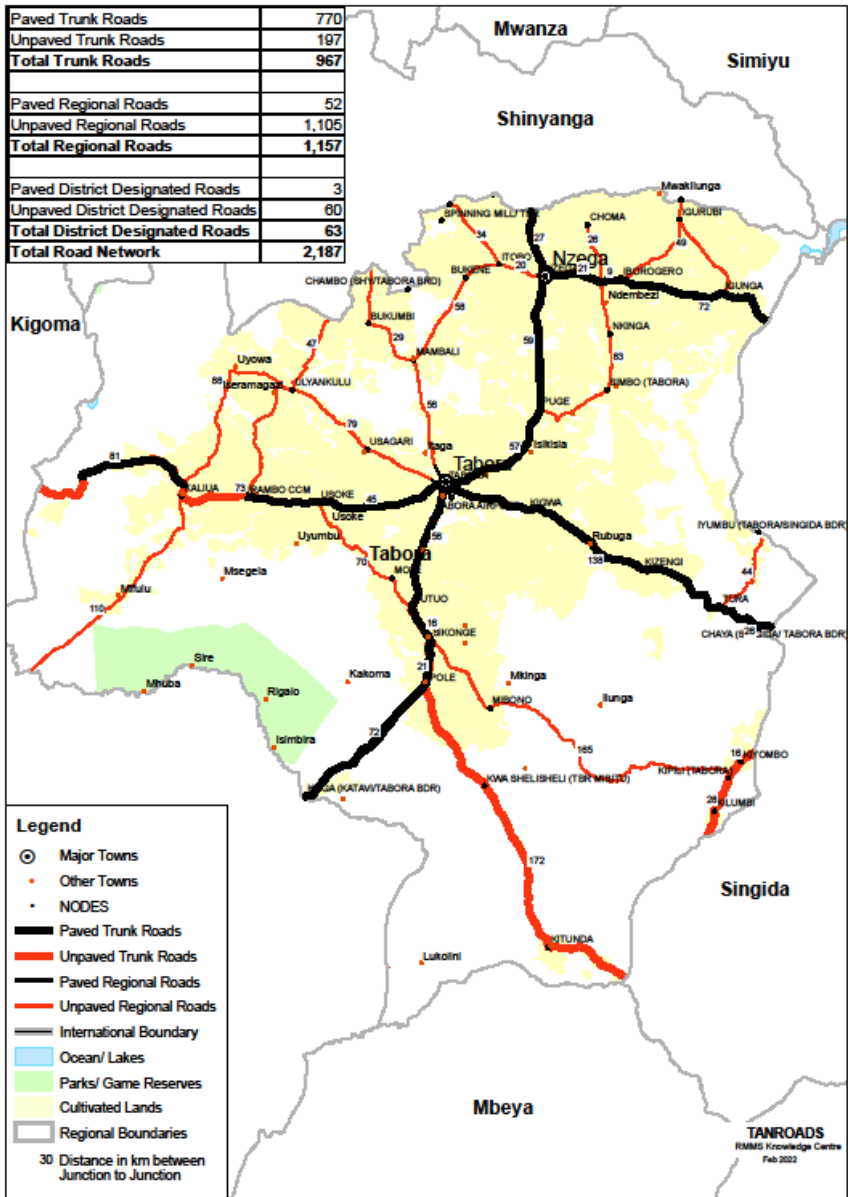


SONGWE REGION ROADS NETWORK



TABORA REGION ROADS NETWORK

Paved Trunk Roads	770
Unpaved Trunk Roads	197
Total Trunk Roads	967
Paved Regional Roads	52
Unpaved Regional Roads	1,105
Total Regional Roads	1,157
Paved District Designated Roads	3
Unpaved District Designated Roads	60
Total District Designated Roads	63
Total Road Network	2,187



TANGA REGION ROADS NETWORK

